



Department of
Planning

Central Regions Land Capacity Analysis

City of Greater Geraldton

March 2016

Central Regions Land Capacity Analysis

City of Greater Geraldton

Disclaimer

This document has been published by the Department of Planning. Any representation, statement, opinion or advice expressed or implied in this publication is made in good faith and on the basis that the Government, its employees and agents are not liable for any damage or loss whatsoever which may occur as a result of action taken or not taken, as the case may be, in respect of any representation, statement, opinion or advice referred to herein. Professional advice should be obtained before applying the information contained in this document to particular circumstances.

© State of Western Australia

Published by the
Department of Planning
Gordon Stephenson House
140 William Street
Perth WA 6000

Locked Bag 2506
Perth WA 6001

Published March 2016
website: www.planning.wa.gov.au
email: corporate@planning.wa.gov.au

tel: 08 6551 9000
fax: 08 6551 9001
National Relay Service: 13 36 77
info: 1800 626 477

The Department of Planning owns all photography in this document unless otherwise stated.

This document is available in alternative formats on application to Communication Services.

Central Regions Land Capacity Analysis

City of Greater Geraldton

1. Introduction

The Central Regions Land Capacity Analysis provides a broad overview of the existing and future land capacity of settlements in the Mid West, Gascoyne and Goldfields-Esperance regions with respect to forecast population growth. In particular, it examines land identified for residential, commercial and industrial development.

The purpose of this document is to present the land-use mapping and associated analysis as it relates to the applicable settlements in the City of Greater Geraldton local government area.

Notably, the analysis suggests there is sufficient land capable of substantial further development (based on the current extents of zoned residential land and land identified for future residential purposes) to cater for the population growth anticipated in the *Western Australia Tomorrow* 2026 population forecasts for the City of Greater Geraldton.

The information presented in this document may provide a basis for a range of regional and local strategic planning including:

- to assist regional planning and provide direction for strategic infrastructure coordination;
- to inform the preparation and/or review of local planning strategies, schemes and structure plans; and
- for more detailed land supply analysis, including further investigation into the infrastructure requirements to service potential development of the future land supply.

Given the dynamic nature of planning and development, it is intended that this paper will be amended periodically to reflect future updates to local planning instruments as relevant.

Notwithstanding this, the information contained in this document has been prepared for guidance purposes only.

A more comprehensive analysis of land supply is undertaken by the Western Australian Planning Commission and the Department of Planning through their Regional HotSpots series, which is applicable to selected regional centres. A Geraldton Regional HotSpots Land Supply Update report is currently proposed.

A Regional HotSpots analysis involves a more detailed methodology compared to the broad-level approach of the Central Regions Land Capacity Analysis. For example, the Regional HotSpots approach takes into account recent lot activity and dwelling approvals, current residential densities, specific constraints to development, and the potential timing of future land releases. Further information is available from www.planning.wa.gov.au/669.asp.

Central Regions Land Capacity Analysis

City of Greater Geraldton

2. Settlement land-use mapping

The Department of Planning (DoP) has prepared mapping that captures the spatial extents of current and future land use in applicable settlements. Within the City of Greater Geraldton, this includes:

- Geraldton (part) (**Map 1**);
- Greenough-Walkaway (**Map 2**);
- Mullewa (**Map 3**); and
- Wandanooka (**Map 4**).

Further context on how this mapping has been developed is provided below.

2.1 Current and future land use

For the purpose of this study, the mapping categorises current and future land uses into broad land-use types. It effectively rationalises and consolidates existing zones and reserves in local planning schemes with intended future land uses identified in a number of strategic documents, including local planning strategies and structure plans.

The areas identified on the maps are based on the general consideration of:

- current zonings and reservations within applicable local planning schemes; and
- other strategic planning documents including local planning strategies, structure plans, layout plans and/or growth plans where relevant.

With respect to this, the extent of current land uses generally reflect that of applicable existing zones and reserves in current local planning schemes; and future land uses generally reflect where land has been identified in other documents for a different (typically more intensive) land use than that identified in the current scheme.

Planning instruments that have informed the preparation of the settlement land-use mapping within the City of Greater Geraldton include the:

- City of Greater Geraldton Local Planning Scheme No. 1;
- City of Greater Geraldton Town Planning Scheme No. 1A (Greenough River);
- City of Greater Geraldton Local Planning Strategy 2015;
- Greater Geraldton Structure Plan 2011;
- Narngulu Industrial Estate Land Use Directions Paper 2010;
- Geraldton Airport Tech Park SP (Amendment 1) 2015;
- Glenfield Structure Plan (Amendment 2) 2015;
- Karloo Local Structure Plan 2015;
- Maloney Street, Karloo Structure Plan 2015;
- Meru Subdivision Guide Plan 2014;
- Moresby Heights Local Structure Plan 2014;
- Scott Rd, Karloo Structure Plan 2015;
- Verita Road Rudds Gully Structure Plan 2014;
- Woorree New Town Subdivision Guide Plan 2010; and
- Wandanooka Layout Plan 1 (draft).

As a general guide, a broad description of what each land-use category considers is provided below:








Central Regions Land Capacity Analysis

City of Greater Geraldton

	Residential	Areas that are predominantly currently zoned in relevant local planning schemes for residential land uses
	Future residential	Areas that have been identified predominantly for future residential land uses through relevant strategic planning processes
	Rural residential	Areas that are predominantly currently zoned in relevant local planning schemes for rural residential land uses
	Future rural residential	Areas that have been identified predominantly for future rural residential land uses through relevant strategic planning processes
	Rural smallholdings	Areas that are predominantly currently zoned in relevant local planning schemes for rural smallholdings land uses
	Future rural smallholdings	Areas that have been identified predominantly for future rural smallholdings land uses through relevant strategic planning processes
	Commercial	Areas that are predominantly currently zoned in relevant local planning schemes for commercial land uses
	Future commercial	Areas that have been identified predominantly for future commercial land uses through relevant strategic planning processes
	Industrial	Areas that are predominantly currently zoned in relevant local planning schemes for industrial land uses
	Future industrial	Areas that have been identified predominantly for future industrial land uses through relevant strategic planning processes
	Rural	Areas that are predominantly currently zoned in relevant local planning schemes for rural land uses
	Future rural	Areas that have been identified predominantly for future rural land uses through relevant strategic planning processes
	Infrastructure and public purposes	Areas that are predominantly currently reserved in relevant local planning schemes for infrastructure and/or public purposes
	Future infrastructure and public purposes	Areas that have been identified predominantly for future infrastructure and/or public purposes through relevant strategic planning processes

Central Regions Land Capacity Analysis

City of Greater Geraldton

	Recreation	Areas that are predominantly currently reserved in relevant local planning schemes for recreation purposes
	Future recreation	Areas that have been identified predominantly for future recreation purposes through relevant strategic planning processes
	Conservation	Areas that are predominantly currently reserved in relevant local planning schemes for conservation purposes
	Future conservation	Areas that have been identified predominantly for future conservation purposes through relevant strategic planning processes
	Port	Areas that are predominantly currently zoned or reserved in relevant local planning schemes for port operations
	Aboriginal community	Areas that are predominantly currently identified as a recommended settlement zone in relevant layout plans, and/or are zoned in relevant local planning schemes for the purposes of Aboriginal settlement
	Investigation area	Areas that have been identified through relevant strategic planning processes where alternative future land uses may be considered subject to further investigation. This may include areas from plans in preparation or in draft form

Central Regions Land Capacity Analysis

City of Greater Geraldton

2.2 Development status

To gain a general understanding of the potential capacity of currently zoned and potential future-zoned land within each settlement, a broad assessment has been undertaken of the development status of applicable land identified for **residential, commercial, industrial, rural residential** and **rural smallholdings** purposes. Generally, the assessment involved a visual interpretation of aerial photography and cadastral information.

This assessment has been undertaken for those settlements where the applicable land uses occur within the map extents, which in the City of Greater Geraldton includes:

- Geraldton (part - City of Greater Geraldton);
- Greenough-Walkaway; and
- Mullewa.

Applicable areas within the map extents have been assessed and considered as being 'developed' or 'capable of substantial further development' as described below.

Developed: 'developed' land is broadly considered as land where development exists or where the necessary infrastructure and services to accommodate development exist. Subdivision is generally consistent with its zoning, however existing urban areas that could potentially accommodate increases in density through urban infill are considered to be 'developed.'

Capable of substantial further development: Land 'capable of substantial further development' consists of undeveloped or underdeveloped land on greenfield sites, where subdivision reflective of its zoning is yet to exist. In some instances however, land may have conditional subdivision approval or be part of a broader structure planning process that still needs to be finalised. It is important

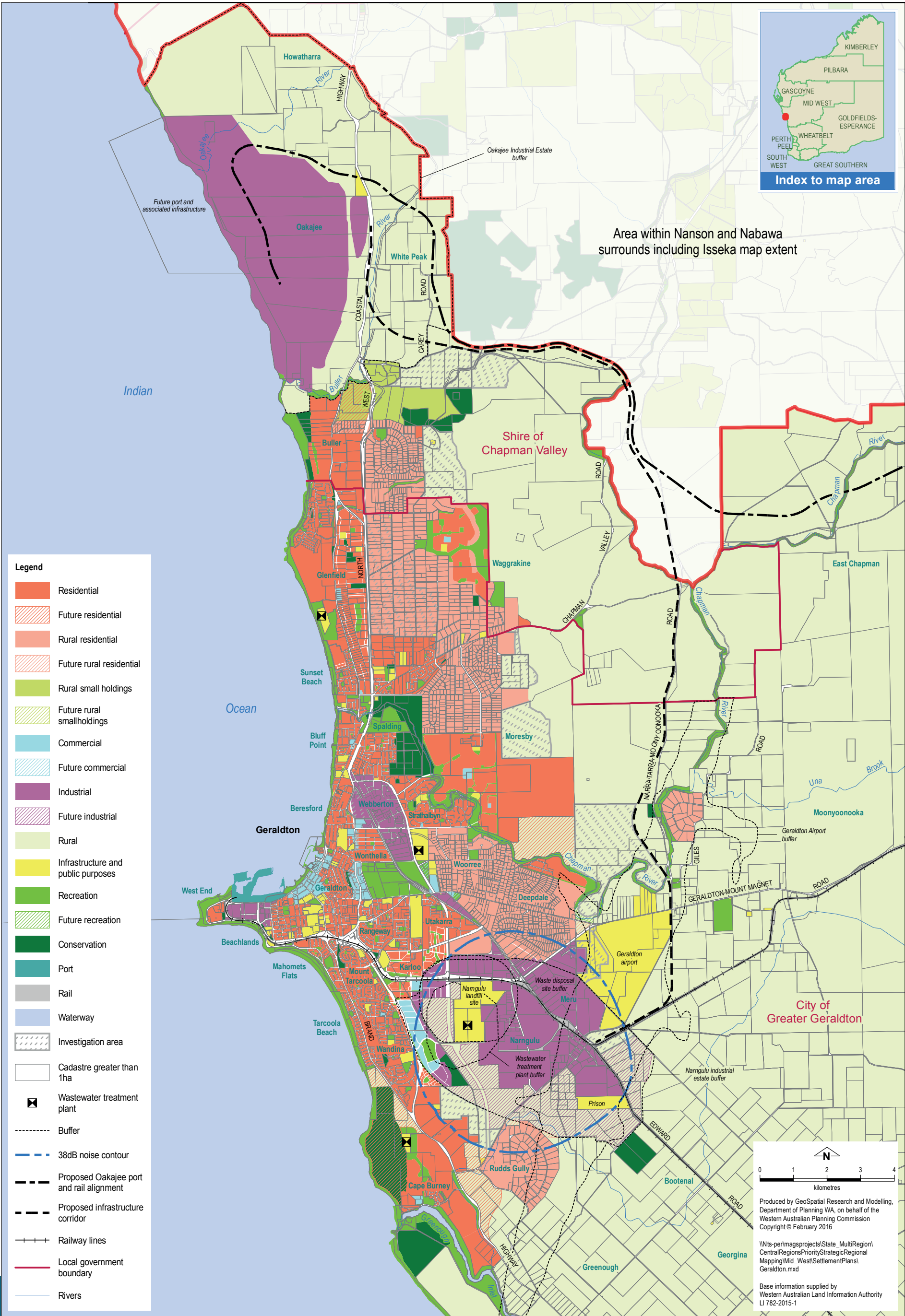
to note that the development of areas that are currently considered to be capable of substantial further development may be subject to a number of constraints; including scheme amendments, structure planning, infrastructure provision, environmental and heritage issues.

Table 1 summarises the development status of each applicable land-use category for all relevant settlements, representing a set of total figures for the entire local government area. It consolidates all data from **Tables 2 to 4**, which summarise the development status of each applicable land-use category as it relates to the individual settlements.

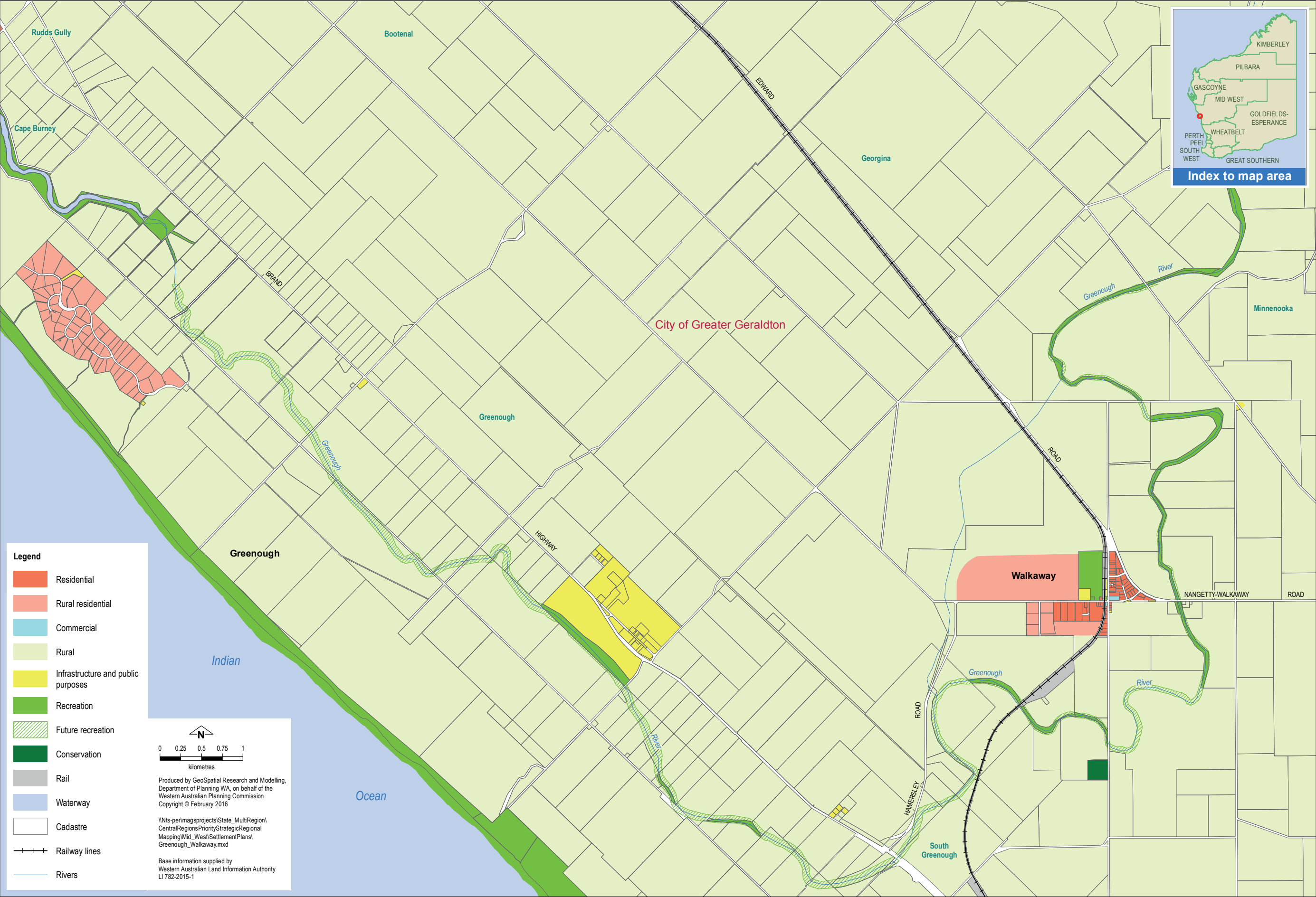
Central Regions Land Capacity Analysis

City of Greater Geraldton

Map 1: Geraldton land use map



Map 2: Greenough-Walkaway land use map

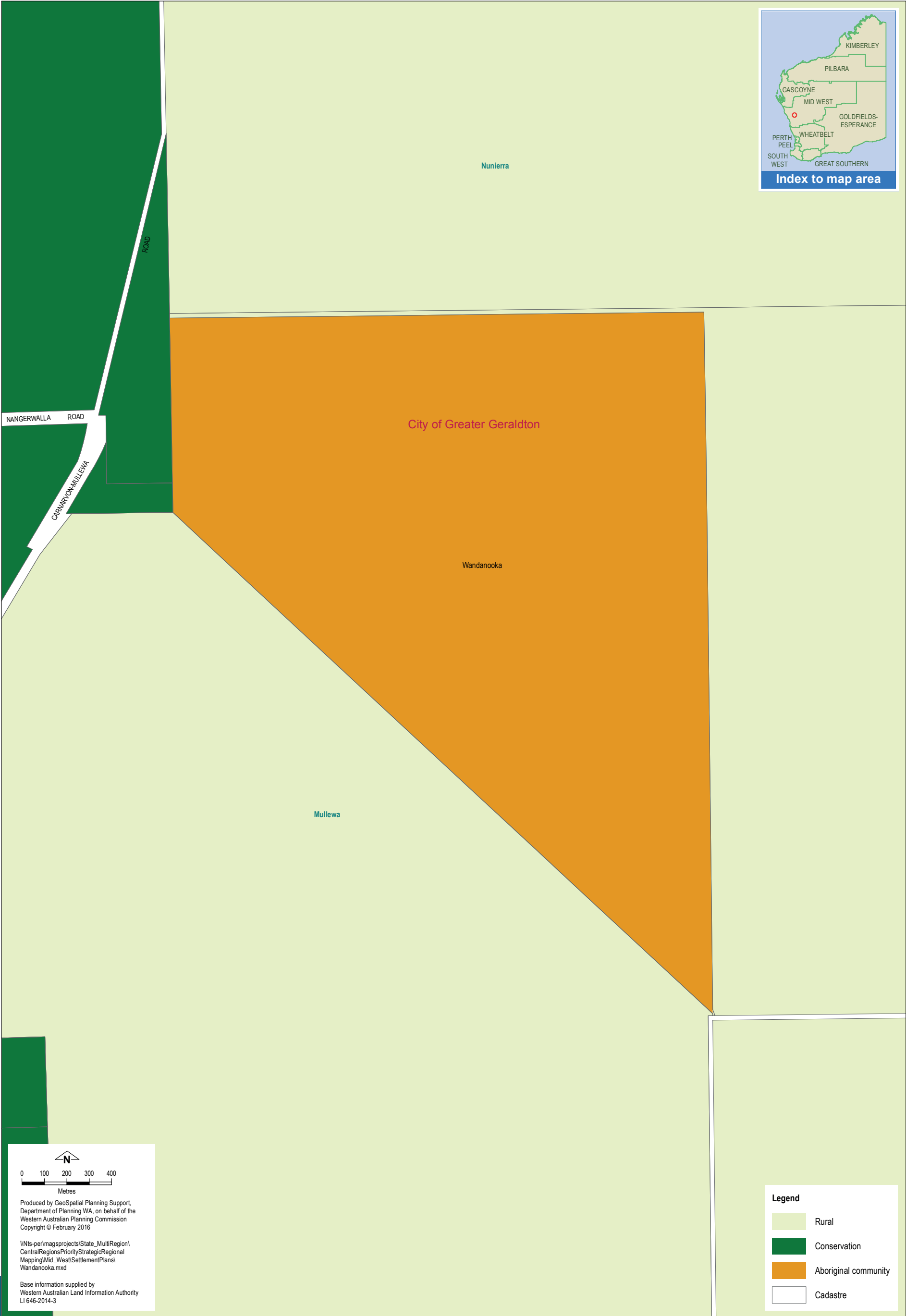


[illegible]

Central Regions Land Capacity Analysis

City of Greater Geraldton

Map 4: Wandanooka land use map



Central Regions Land Capacity Analysis

City of Greater Geraldton

Table 1: City of Greater Geraldton - development status of land in relevant settlements

	Total	Developed (ha)	Capable of substantial further development (ha)
Residential	4,304	1,651	2,653
Future residential	713	0	713
Residential and future residential	5,017	1,651	3,366
Rural residential	3,392	2,826	566
Future rural residential	23	0	23
Rural residential and future rural residential	3,415	2,826	589
Rural smallholdings	0	0	0
Future rural smallholdings	0	0	0
Rural smallholdings and future rural smallholdings	0	0	0
Commercial	241	124	117
Future commercial	22	0	22
Commercial and future commercial	263	124	139
Industrial	1,740	720	1,020
Future industrial	945	0	945
Industrial and future industrial	2,685	720	1,965

Central Regions Land Capacity Analysis

City of Greater Geraldton

Table 2: Geraldton (part - City of Greater Geraldton) - development status of land

	Total	Developed (ha)	Capable of substantial further development (ha)
Residential	4,228	1,591	2,637
Future residential	708	0	708
Residential and future residential	4,936	1,591	3,345
Rural residential	3,173	2,685	488
Future rural residential	23	0	23
Rural residential and future rural residential	3,196	2,685	511
Rural smallholdings	0	0	0
Future rural smallholdings	0	0	0
Rural smallholdings and future rural smallholdings	0	0	0
Commercial	230	116	114
Future commercial	22	0	22
Commercial and future commercial	252	116	136
Industrial	1,705	709	996
Future industrial	945	0	945
Industrial and future industrial	2,650	709	1,941

Central Regions Land Capacity Analysis

City of Greater Geraldton

Table 3: Greenough - Walkaway - development status of land

	Total	Developed (ha)	Capable of substantial further development (ha)
Residential	28	28	0
Future residential	0	0	0
Residential and future residential	28	28	0
Rural residential	219	141	78
Future rural residential	0	0	0
Rural residential and future rural residential	219	141	78
Rural smallholdings	0	0	0
Future rural smallholdings	0	0	0
Rural smallholdings and future rural smallholdings	0	0	0
Commercial	1	1	0
Future commercial	0	0	0
Commercial and future commercial	1	1	0
Industrial	0	0	0
Future industrial	0	0	0
Industrial and future industrial	0	0	0

Central Regions Land Capacity Analysis

City of Greater Geraldton

Table 4: Mullewa - development status of land

	Total	Developed (ha)	Capable of substantial further development (ha)
Residential	48	32	16
Future residential	5	0	5
Residential and future residential	53	32	21
Rural residential	0	0	0
Future rural residential	0	0	0
Rural residential and future rural residential	0	0	0
Rural smallholdings	0	0	0
Future rural smallholdings	0	0	0
Rural smallholdings and future rural smallholdings	0	0	0
Commercial	10	7	3
Future commercial	0	0	0
Commercial and future commercial	10	7	3
Industrial	35	11	24
Future industrial	0	0	0
Industrial and future industrial	35	11	24

Central Regions Land Capacity Analysis

City of Greater Geraldton

3. Capacity analysis

The assessment of the development status of current and future land uses enables a broad-level capacity analysis of the residential development potential of land within the City of Greater Geraldton. The Department of Planning has prepared such an analysis that:

- estimates the potential additional population yield of current and future residential, rural residential and rural smallholdings lands for each relevant settlement; and
- considers possible implications with regard to the local government area's residential land situation in the context of the *Western Australia Tomorrow 2026* population forecasts.

With respect to this, the tables in section 3.1 summarise the estimated additional capacity of each applicable land-use category for relevant settlements within the City of Greater Geraldton. Further analysis is presented in section 3.2 that relates this information to the *Western Australia Tomorrow 2026* population forecasts.

In interpreting the outputs of the analysis, it is important to note that additional capacity is assumed to be accommodated exclusively in areas that are currently considered as being capable of substantial further development. This means that the estimates generally do not account for possible land capacity increases due to infill and/or redevelopment of existing developed areas, and from this perspective are considered broad in nature and is likely to underestimate the potential overall capacity.

Please note that 'relevant settlements' are considered to be those extents that are mapped and contain the applicable land uses subject to analysis.

A capacity analysis for commercial and industrial lands necessarily requires assumptions to be made on employment density. There are currently limitations in the available data required in order to make reasonable assumptions in this regard. In particular, relatively small statistical sample sizes – something that is prevalent in regional areas – compromise the reliability of using the available data for such an application. It is considered that further investigation is required to ascertain representative rates of employment density for commercial and industrial lands in regional areas, and accordingly a capacity analysis of commercial and industrial lands is not included in this paper at this stage.

3.1 Potential capacity of residential, rural residential and rural smallholdings lands

For **residential**, **rural residential** and **rural smallholdings** land uses, potential capacity has been calculated according to scenarios that assume different average development densities that are applicable to each of those land uses. Potential additional lot and population yields have been estimated for each respective current and future land use category as they relate to each relevant settlement in the City of Greater Geraldton.

Table 5 presents the total potential additional lot and population yields for all relevant settlements across the local government area.

Tables 6 to 8 present the potential additional lot and population yields for individual settlements relevant to this analysis.

(Note: Table 5 consolidates all data from Tables 6 to 8, and essentially represents a set of total figures for the entire local government area.)

Central Regions Land Capacity Analysis

City of Greater Geraldton

Table 5: City of Greater Geraldton - estimated capacity of residential, rural residential and rural smallholdings lands deemed capable of substantial further development in relevant settlements

Estimated capacity of residential, rural residential and rural smallholdings lands deemed capable of substantial further development				Estimated potential population yield from additional lots ²
Relevant land-use category/ies	Area (ha)	Average density / average lot size	Potential lot yield ¹	
Residential	2,653	R10	17,245	43,113
		R20	34,489	86,223
		R30	51,734	129,335
Future residential	713	R10	4,635	11,588
		R20	9,269	23,173
		R30	13,904	34,760
Residential and future residential	3,366	R10	21,880	54,701
		R20	43,758	109,396
		R30	65,638	164,095
Rural residential	566	1 ha	425	1,063
		2 ha	212	530
		4 ha	106	265
Future rural residential	23	1 ha	17	43
		2 ha	9	23
		4 ha	4	10
Rural residential and future rural residential	589	1 ha	442	1,106
		2 ha	221	553
		4 ha	110	275
Rural smallholdings	0	8 ha	0	0
		20 ha	0	0
		40 ha	0	0
Future rural smallholdings	0	8 ha	0	0
		20 ha	0	0
		40 ha	0	0
Rural smallholdings and future rural smallholdings	0	8 ha	0	0
		20 ha	0	0
		40 ha	0	0

¹ For residential land, the 35 per cent of land necessary to support land requirements for public open space and streets (Liveable Neighbourhoods, 2007) has been factored into these figures. For rural residential and rural smallholdings lands, a 25 per cent allowance from gross land areas has been applied to account for the relevant land requirements to support development for these particular land uses.

² The population yield per dwelling is calculated at 2.5 people per dwelling unit (average people per household for the Mid West SA3 – Australian Bureau of Statistics, 2011 Census).

Central Regions Land Capacity Analysis

City of Greater Geraldton

Table 6: Geraldton (part - City of Greater Geraldton) - estimated capacity of residential, rural residential and rural smallholdings lands deemed capable of substantial further development

Estimated capacity of residential, rural residential and rural smallholdings lands deemed capable of substantial further development				Estimated potential population yield from additional lots ²
Relevant land-use category/ies	Area (ha)	Average density / average lot size	Potential lot yield ¹	
Residential	2,637	R10	17,141	42,853
		R20	34,281	85,703
		R30	51,422	128,555
Future residential	708	R10	4,602	11,505
		R20	9,204	23,010
		R30	13,806	34,515
Residential and future residential	3,345	R10	21,743	54,358
		R20	43,485	108,713
		R30	65,228	163,070
Rural residential	488	1 ha	366	915
		2 ha	183	458
		4 ha	92	230
Future rural residential	23	1 ha	17	43
		2 ha	9	23
		4 ha	4	10
Rural residential and future rural residential	511	1 ha	383	958
		2 ha	192	481
		4 ha	96	240
Rural smallholdings	0	8 ha	0	0
		20 ha	0	0
		40 ha	0	0
Future rural smallholdings	0	8 ha	0	0
		20 ha	0	0
		40 ha	0	0
Rural smallholdings and future rural smallholdings	0	8 ha	0	0
		20 ha	0	0
		40 ha	0	0

¹ For residential land, the 35 per cent of land necessary to support land requirements for public open space and streets (Liveable Neighbourhoods, 2007) has been factored into these figures. For rural residential and rural smallholdings lands, a 25 per cent allowance from gross land areas has been applied to account for the relevant land requirements to support development for these particular land uses.

² The population yield per dwelling is calculated at 2.5 people per dwelling unit (average people per household for the Mid West SA3 – Australian Bureau of Statistics, 2011 Census).

Central Regions Land Capacity Analysis

City of Greater Geraldton

Table 7: Greenough-Walkaway - estimated capacity of residential, rural residential and rural smallholdings lands deemed capable of substantial further development

Estimated capacity of residential, rural residential and rural smallholdings lands deemed capable of substantial further development				Estimated potential population yield from additional lots ²
Relevant land-use category/ies	Area (ha)	Average density / average lot size	Potential lot yield ¹	
Residential	0	R10	0	0
		R20	0	0
		R30	0	0
Future residential	0	R10	0	0
		R20	0	0
		R30	0	0
Residential and future residential	0	R10	0	0
		R20	0	0
		R30	0	0
Rural residential	78	1 ha	59	148
		2 ha	29	73
		4 ha	15	38
Future rural residential	0	1 ha	0	0
		2 ha	0	0
		4 ha	0	0
Rural residential and future rural residential	78	1 ha	59	148
		2 ha	29	73
		4 ha	15	38
Rural smallholdings	0	8 ha	0	0
		20 ha	0	0
		40 ha	0	0
Future rural smallholdings	0	8 ha	0	0
		20 ha	0	0
		40 ha	0	0
Rural smallholdings and future rural smallholdings	0	8 ha	0	0
		20 ha	0	0
		40 ha	0	0

¹ For residential land, the 35 per cent of land necessary to support land requirements for public open space and streets (Liveable Neighbourhoods, 2007) has been factored into these figures. For rural residential and rural smallholdings lands, a 25 per cent allowance from gross land areas has been applied to account for the relevant land requirements to support development for these particular land uses.

² The population yield per dwelling is calculated at 2.5 people per dwelling unit (average people per household for the Mid West SA3 – Australian Bureau of Statistics, 2011 Census).

Central Regions Land Capacity Analysis

City of Greater Geraldton

Table 8: Mullewa - estimated capacity of residential, rural residential and rural smallholdings lands deemed capable of substantial further development

Estimated capacity of residential, rural residential and rural smallholdings lands deemed capable of substantial further development				Estimated potential population yield from additional lots ²
Relevant land-use category/ies	Area (ha)	Average density / average lot size	Potential lot yield ¹	
Residential	16	R10	104	260
		R20	208	520
		R30	312	780
Future residential	5	R10	33	83
		R20	65	163
		R30	98	245
Residential and future residential	21	R10	137	343
		R20	273	683
		R30	410	1,025
Rural residential	0	1 ha	0	0
		2 ha	0	0
		4 ha	0	0
Future rural residential	0	1 ha	0	0
		2 ha	0	0
		4 ha	0	0
Rural residential and future rural residential	0	1 ha	0	0
		2 ha	0	0
		4 ha	0	0
Rural smallholdings	0	8 ha	0	0
		20 ha	0	0
		40 ha	0	0
Future rural smallholdings	0	8 ha	0	0
		20 ha	0	0
		40 ha	0	0
Rural smallholdings and future rural smallholdings	0	8 ha	0	0
		20 ha	0	0
		40 ha	0	0

¹ For residential land, the 35 per cent of land necessary to support land requirements for public open space and streets (Liveable Neighbourhoods, 2007) has been factored into these figures. For rural residential and rural smallholdings lands, a 25 per cent allowance from gross land areas has been applied to account for the relevant land requirements to support development for these particular land uses.

² The population yield per dwelling is calculated at 2.5 people per dwelling unit (average people per household for the Mid West SA3 – Australian Bureau of Statistics, 2011 Census).

Central Regions Land Capacity Analysis

City of Greater Geraldton

Based on the potential population yield calculations in **Table 5**, estimated total population figures for the City of Greater Geraldton are provided for low, medium and high density development scenarios, which are presented in **Table 9**. Within each scenario, two subsets are considered:

- 'A' considers the potential additional population yield of all residential, rural residential and rural smallholdings land capable of further development at the average density or lot sizes attributable to that particular scenario; and
- 'B' considers the potential additional population yield of all residential, future residential, rural residential, future rural residential, rural smallholdings and future rural smallholdings land capable of further development at the average density or lot sizes attributable to that particular scenario.

These figures assume that all additional population in the local government area is accommodated on residential, rural residential and rural smallholdings lands deemed capable of substantial further development within the settlements considered.

Table 9: City of Greater Geraldton - estimated potential population capacity

Scenario ¹ (average density of residential land / average lot size of rural residential land / average lot size of rural smallholdings land)		Current population ²	Estimated potential population yield from additional lots ³	Estimated total population ⁴
1. Low density scenario (R10 / 4 ha / 40 ha)	1A	41,087	43,378	84,465
	1B	41,087	54,976	96,063
2. Medium density scenario (R20 / 2 ha / 20 ha)	2A	41,087	86,753	127,840
	2B	41,087	109,949	151,036
3. High density scenario (R30 / 1 ha / 8 ha)	3A	41,087	130,398	171,485
	3B	41,087	165,201	206,288

¹ Scenarios consider the estimated potential population capacity of the City of Greater Geraldton through estimating the potential additional population capacity of land within all relevant settlements with a residential land use that has been deemed capable of substantial further development.

² City of Greater Geraldton 2014 Preliminary Estimated Residential Population (Australian Bureau of Statistics, 3218.0 – Regional Population Growth 2013-14).

³ As per the relevant assumptions as described for **Table 5**.

⁴ The 'estimated total population' is the sum of the 'current population' and the 'estimated potential population yield from additional lots' column.

Central Regions Land Capacity Analysis

City of Greater Geraldton

3.2 Comparison of potential capacity estimates with the *Western Australia Tomorrow 2026* population forecasts

Western Australia Tomorrow (Western Australian Planning Commission, 2015) contains population forecasts produced by the State Demographer and are considered to be the State's official population forecasts.

Table 10 presents the *Western Australia Tomorrow 2026* population forecasts for the City of Greater Geraldton. For further information on these forecasts, please refer to <http://www.planning.wa.gov.au/publications/6194.asp>.

The figures in the 'additional population' column are the difference between the 2026 forecast population and the Australian Bureau of Statistics 2014 Preliminary Estimated Residential Population for the City of Greater Geraldton (41,087).

Significantly, these forecasts provide a point of comparison for interpreting the potential capacities of residential land as determined through this analysis.

Table 10: City of Greater Geraldton - *Western Australia Tomorrow 2026* population forecasts (WAPC, 2015)

WA Tomorrow forecast bands	2026 forecast population	Additional population
Band A	46,620	5,533
Band B	47,460	6,373
Band C	48,020	6,933
Band D	48,590	7,503
Band E	49,400	8,313

3.2.1 Estimated additional residential land requirements to accommodate population forecasts

Table 11 presents estimates for the amount of residential land that would be required to accommodate the additional population for each of the population forecasts. Estimates are presented according to three different average densities of residential development, being R10, R20 and R30.

These estimates are compared to the total of all current residential and future residential land identified in relevant City of Greater Geraldton settlements as being capable of substantial further development. The figures under the 'surplus' column indicate the magnitude of the potential surplus of residential land from the extents currently identified once the additional forecast population has been allowed for. A negative figure in this column indicates a shortfall in the identified areas of residential lands with respect to that required to accommodate the additional population from the relevant forecast.

The estimates in **Table 11** assume:

- all population growth occurs on residential and future residential land that has been identified as being capable of substantial future development in this analysis. To keep the calculations relatively straightforward, they do not consider additional population being accommodated on rural residential or rural smallholdings lands, nor do they take into account potential increases in population occurring due to infill development. They therefore likely overestimate residential land requirements;
- a 35 per cent allowance from gross land areas for various requirements to support development (e.g. public open space, streets, other infrastructure); and
- the number of people per dwelling remains constant.

Central Regions Land Capacity Analysis

City of Greater Geraldton

Based on the current extents of zoned residential land and land identified for future residential purposes, this analysis suggests that there is a sufficient amount of land capable of substantial further development to cater for the population growth anticipated in the *Western Australia Tomorrow* 2026 population forecasts for the City of Greater Geraldton.

Please note that this component of the analysis only considers the local government as a whole as opposed to each individual settlement. This is primarily due to the alignment of available data inputs at this geographic scale.

Table 11: City of Greater Geraldton - estimated additional residential land requirements to accommodate population forecasts

WA Tomorrow forecast bands	Residential ¹							
	Additional population	Current and future land capable of substantial further development (ha) ²	R10 average density		R20 average density		R30 average density	
			Est. land required to accom. additional population (ha) ³	Surplus (ha) ⁴	Est. land required to accom. additional population (ha) ³	Surplus (ha) ⁴	Est. land required to accom. additional population (ha) ³	Surplus (ha) ⁴
Band A	5,533	3,366	340	3,026	170	3,196	113	3,253
Band B	6,373	3,366	392	2,974	196	3,170	131	3,235
Band C	6,933	3,366	427	2,939	213	3,153	142	3,224
Band D	7,503	3,366	462	2,904	231	3,135	154	3,212
Band E	8,313	3,366	512	2,854	256	3,110	171	3,195

¹ These estimates assume that all population growth occurs on residential and future residential land that has been identified as being capable of substantial future development in this analysis. To keep the calculations relatively straightforward, they do not consider additional population being accommodated on rural residential or rural smallholdings lands, nor do they take into account potential increases in population occurring due to infill development. The estimates are therefore likely to overestimate residential land requirements.

² Total area of current and future residential lands capable of substantial further development for entire local government area as per relevant figures from **Table 1**.

³ A 35 per cent allowance from gross land areas to support land requirements for public open space and streets (Liveable Neighbourhoods, 2007) and a population yield per dwelling of 2.5 people per dwelling unit (average people per household for the Mid West SA3 – ABS 2011 Census) have been factored into the estimated areas of residential land required to accommodate forecast additional populations.

⁴ A positive figure in this column indicates that the additional population under the relevant population forecast should be able to be accommodated within the areas of residential and future residential land currently identified, without additional residential land being required. A negative figure represents the shortfall in the identified areas of residential lands with respect to that required to accommodate the additional population.