



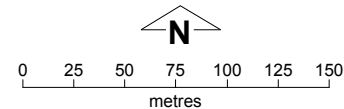
Wakathuni Layout Plan 1 - Living Area

- Land Use**
- community
 - industrial
 - open space
 - public utility
 - recreation
 - residential
 - road reserve
 - rural
 - waterway

- Land Administration**
- 63 settlement layout (SL) lot & SL-lot number

- Exclusion Boundary**
- industry
 - no go area
 - power station
 - wastewater

- Features**
- bore



This layout plan does not constitute development approval. It is the responsibility of the developer to ensure that all relevant consents, approvals, licences and clearances are in place prior to commencing physical works on the site. Organisations responsible for such matters may include land owner, local government, native title representative body, Aboriginal Cultural Materials Committee, incorporated community council, Environmental Protection Authority, relevant regulatory authorities and departments.

Cadastral data supplied by the Western Australian Land Information Authority (License LI 862-2016-1). Extraction date of cadastre 25/08/2017. Drinking water source protection area derived from the Wakathuni Drinking Water Source Protection Plan June 2017, commissioned by the Department of Communities. April 2017 aerial image provided by Landgate. Projection : MGA Zone 50, GDA 94 Map document: Wakathuni LP1 Amd7 - Living area.mxd Layout plan prepared by Department of Planning, Lands & Heritage. © Western Australian Planning Commission 2017 Settlement layout not derived from calculated dimensions. A no go area is a culturally significant area that is not suitable for land use or development change and which may have access restrictions. No go area exclusion boundaries are intentionally ill-defined.

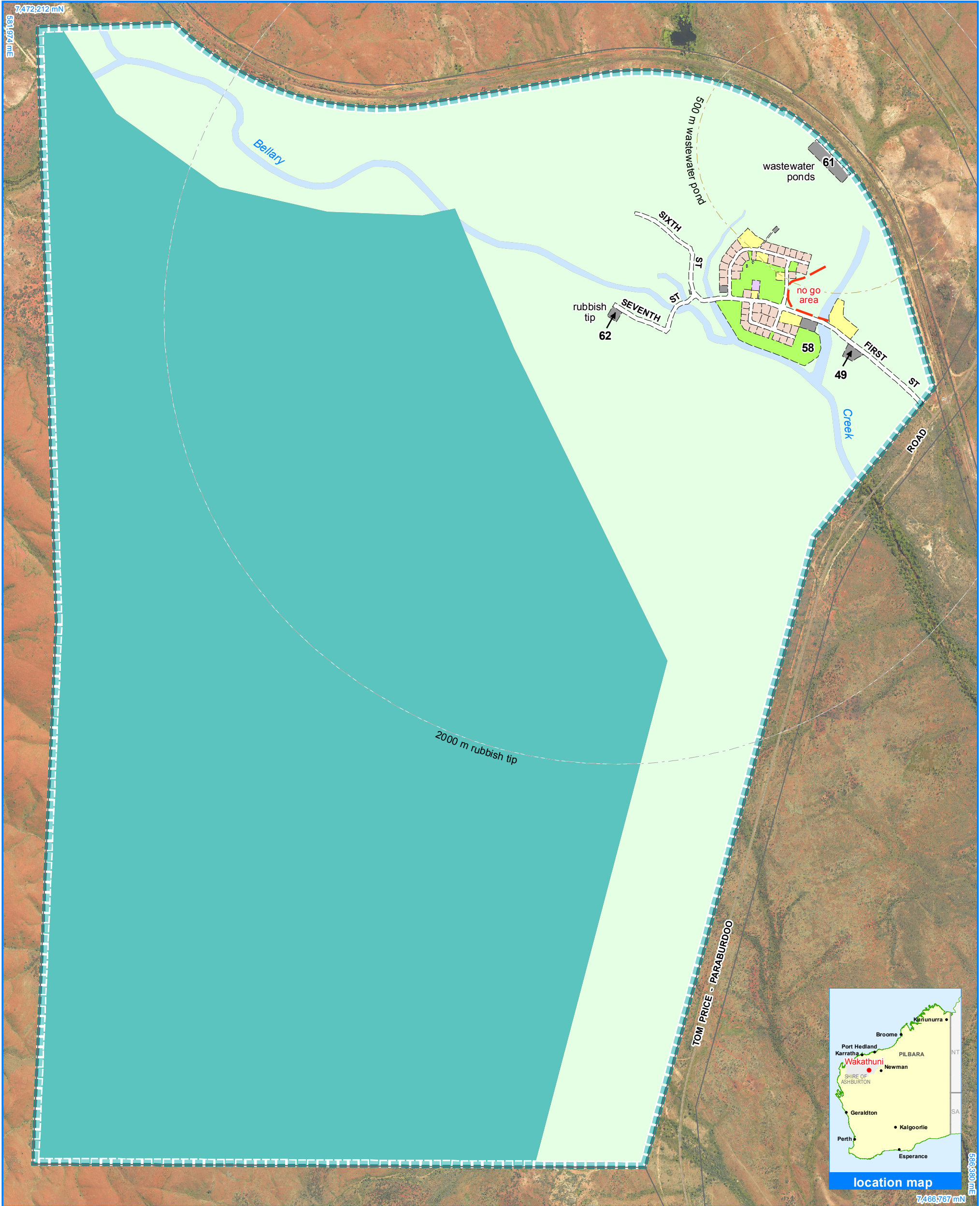


Government of Western Australia
Department of Communities
Housing

| Layout Plan 1 endorsement | |
|---------------------------|----------------|
| Community | 6 July 2001 |
| Local Government | 21 August 2001 |
| Traditional Owners | - |
| WAPC | 2 October 2001 |

| Amendment 7 endorsement | |
|-------------------------|----------------|
| WAPC | 29 August 2017 |

Amendment 7



- Land Use**
- community
 - drinking water source protection area
 - industrial
 - open space
 - public utility
 - recreation
 - residential
 - road reserve
 - rural
 - waterway

- Land Administration**
- cadastre
 - recommended settlement zone
 - settlement layout (SL) lot & SL-lot number
- Exclusion Boundary**
- no go area
 - wastewater
 - utility

0 100 200 300 400 500 600 metres

This layout plan does not constitute development approval.

It is the responsibility of the developer to ensure that all relevant consents, approvals, licences and clearances are in place prior to commencing physical works on the site. Organisations responsible for such matters may include land owner, local government, native title representative body, Aboriginal Cultural Materials Committee, incorporated community council, Environmental Protection Authority, relevant regulatory authorities and departments.

Cadastral data supplied by the Western Australian Land Information Authority (Licence LI 862-2016-1). Extraction date of cadastre 25/08/2017. Drinking water source protection area derived from the Wakathuni Drinking Water Source Protection Plan June 2017, commissioned by the Department of Communities.

April 2017 aerial image provided by Landgate.

Projection : MGA zone 50, GDA 94

Map document : Wakathuni LP1 Amd7 - Context.mxd

Layout plan prepared by Department of Planning, Lands & Heritage.

© Western Australian Planning Commission 2017

Settlement layout not derived from calculated dimensions.

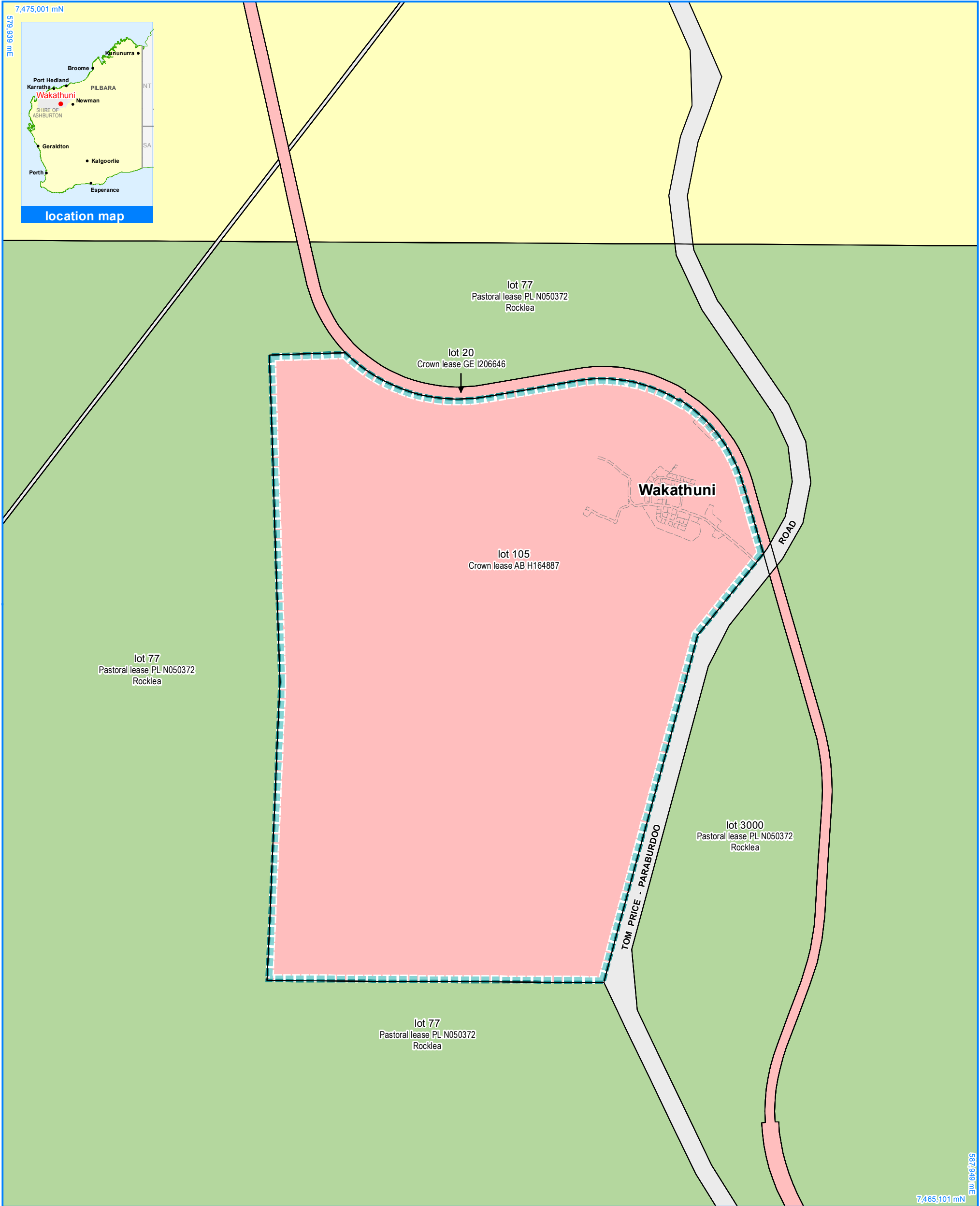
A no go area is a culturally significant area that is not suitable for land use or development change and which may have access restrictions.

No go area exclusion boundaries are intentionally ill-defined.



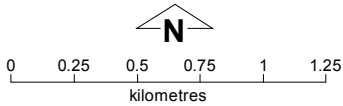
Western Australian Planning Commission
Government of Western Australia
Department of Communities
Housing

| Layout Plan 1 endorsement | |
|---------------------------|----------------|
| Community | 6 July 2001 |
| Local Government | 21 August 2001 |
| Traditional Owners | - |
| WAPC | 2 October 2001 |
| Amendment 7 endorsement | |
| WAPC | 29 August 2017 |



- Land Tenure**
- leasehold
 - other
 - pastoral lease
 - unallocated crown land

- Land Administration**
- cadastre
 - recommended settlement zone
 - settlement layout (SL) lot



This layout plan does not constitute development approval.
It is the responsibility of the developer to ensure that all relevant consents, approvals, licences and clearances are in place prior to commencing physical works on the site. Organisations responsible for such matters may include land owner, local government, native title representative body, Aboriginal Cultural Materials Committee, incorporated community council, Environmental Protection Authority, relevant regulatory authorities and departments.

Cadastral data supplied by the Western Australian Land Information Authority (Licence LI 862-2016-1).
Extraction date of cadastre 25/08/2017.
MGA Zone 50, GDA 94
Map document : Wakathuni LP1 Amd 7 - Land Tenure.mxd
Layout plan prepared by Dept. of Planning, Lands & Heritage.
© Western Australian Planning Commission 2017
Settlement layout not derived from calculated dimensions.



| Layout Plan 1 endorsement | |
|---------------------------|----------------|
| Community | 6 July 2001 |
| Local Government | 21 August 2001 |
| Traditional Owners | - |
| WAPC | 2 October 2001 |
| Amendment 7 endorsement | |
| WAPC | 29 August 2017 |