

Jarlmadangah Burru Layout Plan 2 - Living Area

Land Use

- commercial
- community
- industrial
- open space
- public utility
- recreation
- residential
- road reserve
- rural

Land Administration

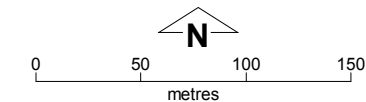
67 settlement layout (SL) lot & SL-lot number

Exclusion Boundary

- drinking water source wellhead protection zone
- industry
- no go boundary
- power station
- wastewater

Features

- production bore



This layout plan does not constitute development approval. It is the responsibility of the developer to ensure that all relevant consents, approvals, licences and clearances are in place prior to commencing physical works on the site. Organisations responsible for such matters may include land owner, local government, native title representative body, Aboriginal Cultural Materials Committee, incorporated community council, Environmental Protection Authority, relevant regulatory authorities and departments.

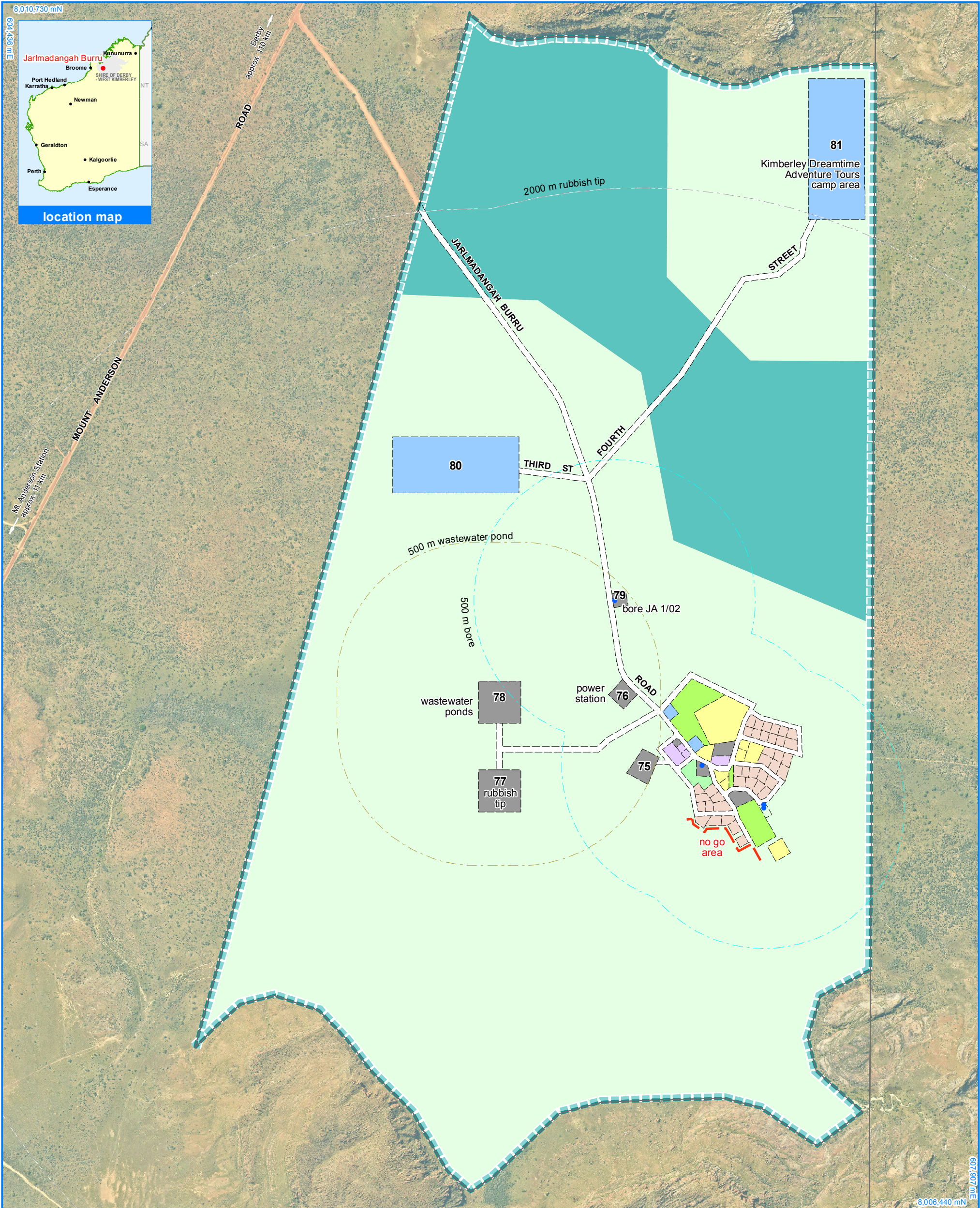
Cadastral data supplied by the Western Australian Land Information Authority (License LI 862-2016-1). Extraction date 18/05/2018. Drinking water source protection area derived from the Jarlmadangah Burru Drinking Water Source Protection Plan December 2017 commissioned by the Department of Communities (Housing). April 2018 aerial image provided by Landgate. Projection : MGA zone 51, GDA 94. Map document: Jarlmadangah Burru LP2 Amd4 - Living area v2.mxd. Layout plan prepared by Department of Planning, Lands & Heritage. © Western Australian Planning Commission 2018. Settlement layout not derived from calculated dimensions. A no go area is a culturally significant area that is not suitable for land use or development change and which may have access restrictions. No go area exclusion boundaries are intentionally ill-defined.



Layout Plan 2 endorsement	
Community	1 May 2007
Local Government	8 June 2007
Traditional Owners	-
WAPC	24 July 2007

Amendment 4 endorsement	
WAPC	15 January 2018

Amendment 4



Land Use

- commercial
- community
- drinking water source protection area
- industrial
- open space
- public utility
- recreation
- residential
- road reserve
- rural

Land Administration

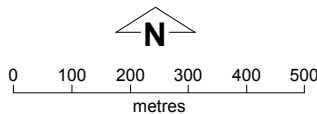
- cadastre
- recommended settlement zone
- settlement layout (SL) lot & SL-lot number

Exclusion Boundary

- drinking water source wellhead protection zone
- no go boundary
- utility
- wastewater

Features

- production bore

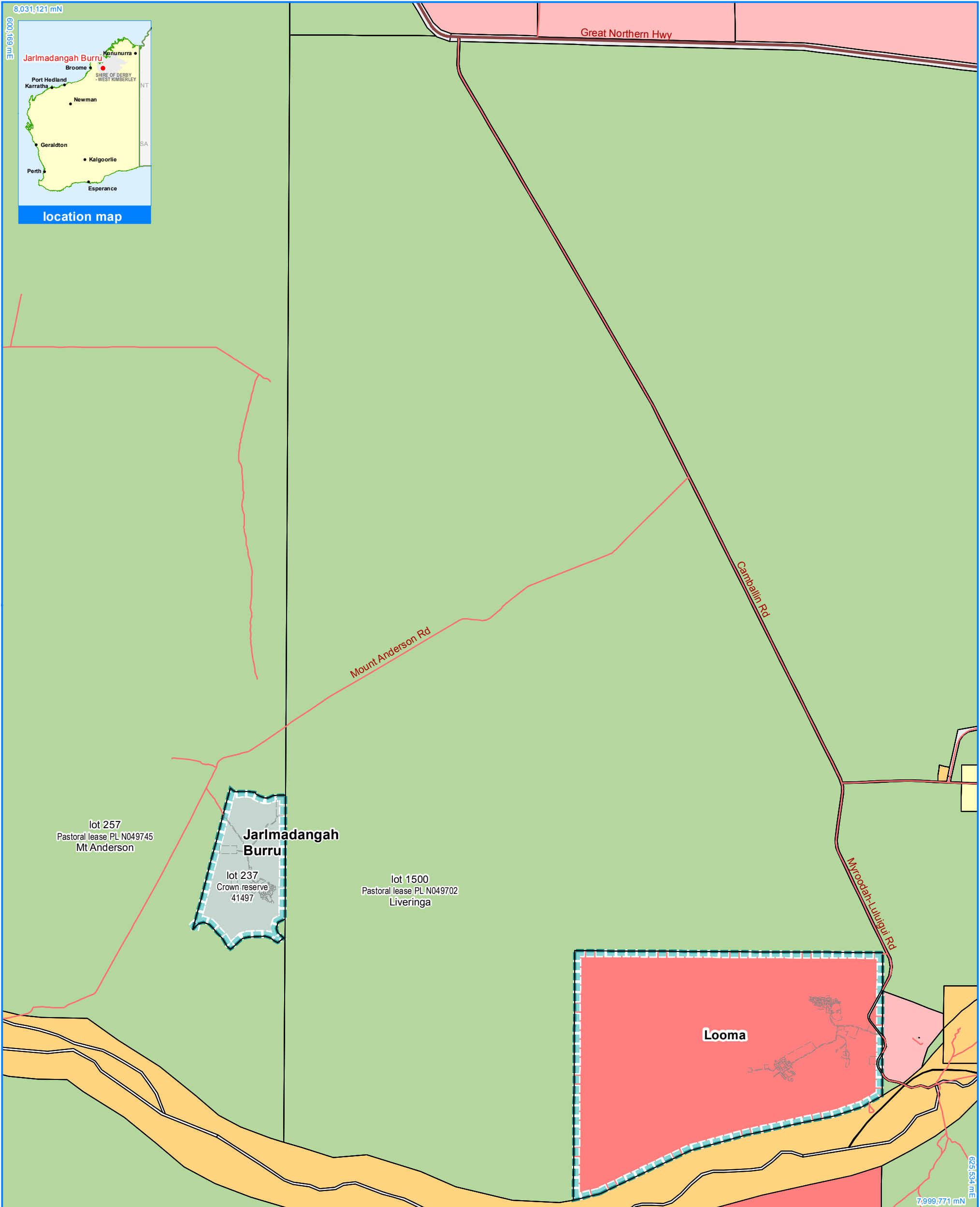


This layout plan does not constitute development approval. It is the responsibility of the developer to ensure that all relevant consents, approvals, licences and clearances are in place prior to commencing physical works on the site. Organisations responsible for such matters may include land owner, local government, native title representative body, Aboriginal Cultural Materials Committee, incorporated community council, Environmental Protection Authority, relevant regulatory authorities and departments.

Cadastral data supplied by the Western Australian Land Information Authority (Licence LI 862-2016-1). Extraction date of cadastre 18/05/2018. Drinking water source protection area derived from the Jarlmadangah-Burru Drinking Water Source Protection Plan December 2017 commissioned by the Department of Communities (Housing). April 2018 aerial image provided by Landgate. Projection : MGA zone 51, GDA 94. Map document: Jarlmadangah Burru LP2 Amd4 - Context v2.mxd. Layout plan prepared by Dept. of Planning, Lands & Heritage. © Western Australian Planning Commission 2018. Settlement layout lots are not derived from calculated dimensions. A no go area is a culturally significant area that is not suitable for land use or development change and which may have access restrictions. No go area exclusion boundaries are intentionally ill-defined.

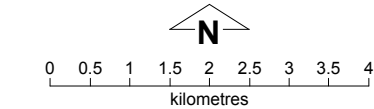


Layout Plan 2 endorsement	
Community	1 May 2007
Local Government	8 June 2007
Traditional Owners	-
WAPC	24 July 2007
Amendment 4 endorsement	
WAPC	15 January 2018



- Land Tenure**
- crown reserve
 - crown reserve - ALT
 - freehold
 - leasehold
 - other
 - pastoral lease
 - unallocated crown land

- Land Administration**
- cadastre
 - recommended settlement zone
 - settlement layout (SL) lot
- Roads**
- national highway
 - minor road



This layout plan does not constitute development approval.
It is the responsibility of the developer to ensure that all relevant consents, approvals, licences and clearances are in place prior to commencing physical works on the site. Organisations responsible for such matters may include land owner, local government, native title representative body, Aboriginal Cultural Materials Committee, incorporated community council, Environmental Protection Authority, relevant regulatory authorities and departments.

Cadastral data supplied by the Western Australian Land Information Authority (Licence LI 862-2016-1).
Extraction date of cadastre 18/05/2018.
Projection : MGA zone 51, GDA 94
Map document :
Jarlmadangah Burru LP2 Amd4 - Land Tenure v2.mxd
Layout plan prepared by Dept. of Planning, Lands & Heritage.
© Western Australian Planning Commission 2018
Settlement layout not derived from calculated dimensions.



Layout Plan 2 endorsement	
Community	1 May 2007
Local Government	8 June 2007
Traditional Owners	-
WAPC	24 July 2007
Amendment 4 endorsement	
WAPC	15 January 2018