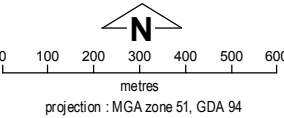


Bayulu Layout Plan 1 - Context Amendment 11

Features	
	production bore
Land Administration	
	cadastre
	lodged cadastre
	private lease
	recommended settlement zone
	settlement zone
	settlement layout (SL) lot & SL-lot number
Exclusion Boundary	
	drinking water source wellhead protection zone
	no-go area
	wastewater
Land Use	
	road reserve road, essential service distribution network
	residential house, residential quarters
	visitor camping camping ground, traditional law and culture
	community child care premises, civic use, corrective institution, educational establishment, health care centre, worship building
	open space agriculture - extensive, essential service distribution network, traditional law and culture
	rural rural pursuit, agriculture - extensive, animal husbandry - intensive, agriculture - intensive, essential service distribution network
	recreation recreation, essential service distribution network
	pedestrian access way essential service distribution network, pedestrian access way
	drinking water source protection area any use permitted under the Drinking Water Source Protection Plan
	waterway agriculture - extensive, agriculture - intensive, traditional law and culture
	commercial art centre, caravan park, motel, office, service station, shop, tourism accommodation
	industrial fuel depot, industry, motor vehicle repair, storage, vehicle wrecking
	public utility electricity supply, essential service distribution network, drinking water supply, wastewater disposal, telecommunications, rubbish disposal

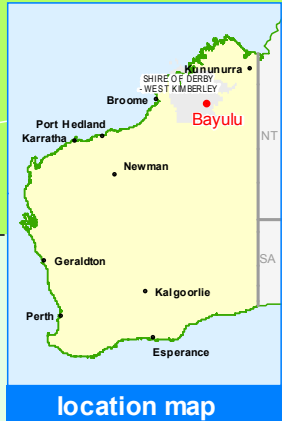
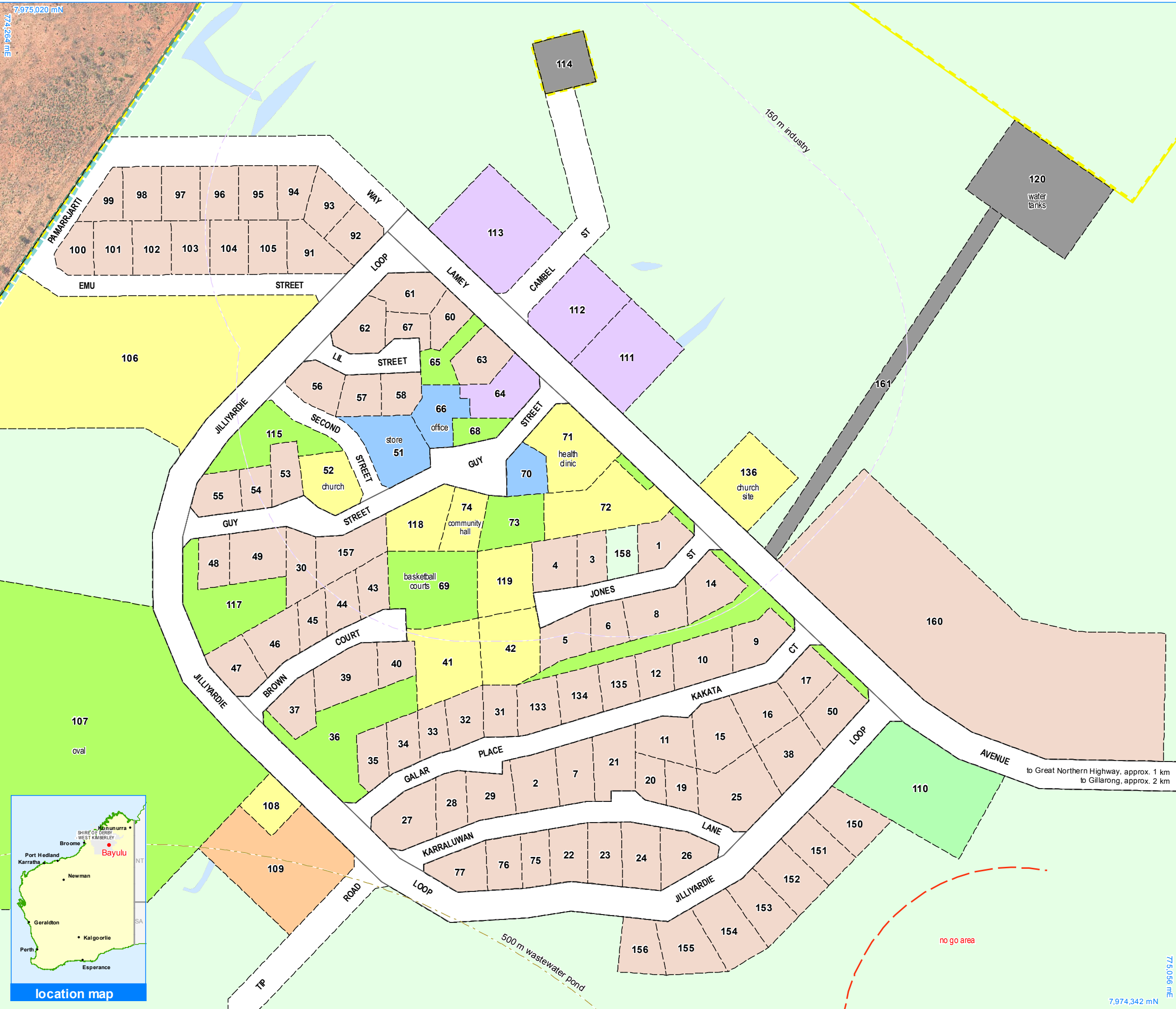


This Layout Plan does not constitute development approval. It is the responsibility of the developer to ensure that all relevant consents, approvals, licences and clearances are in place prior to commencing physical works on the site. Organisations responsible for such matters may include land owner, local government, incorporated community council, native title representative body, native title prescribed body corporate, Aboriginal Cultural Materials Committee, Environmental Protection Authority, state and federal government departments, and other relevant regulatory authorities. Go to the [PlanWA interactive planning map](#) to view Layout Plans with other spatial layers.

Base information and aerial imagery supplied by the Western Australian Land Information Authority SLIP 1096-2018-1. Cadastre date 19/07/2019. April 2016 & May 2019 aerial image. Drinking water source protection area derived from the Bayulu Drinking Water Source Protection Plan December 2009, commissioned by the Dept. of Communities (Housing). Settlement layout lots are not derived from calculated dimensions. Map document : Bayulu LP1 Amd11 - Context v4.mxd Produced by Land Use Planning, Department of Planning, Lands & Heritage on behalf of the Western Australian Planning Commission. © Western Australian Planning Commission 2019



Layout Plan 1 endorsement	
Community	30 March 2011
Local Government	8 February 2002
Traditional Owners	20 February 2014
WAPC	14 May 2002
Amendment 11 endorsement	
WAPC	9 August 2017



Bayulu Layout Plan 1 - Living Area Amendment 11

Land Administration

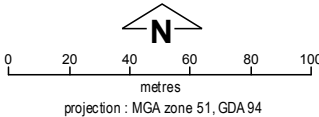
	cadastre
	proposed cadastre
	private lease
	recommended settlement zone
	settlement zone
	settlement layout (SL) lot & SL-lot number

Exclusion Boundary (see [Aboriginal Settlements Guideline 3](#))

	industry
	no-go area
	wastewater

Land Use (see [Aboriginal Settlements Guideline 1](#))

road reserve	road, essential service distribution network
residential	house, residential quarters
visitor camping	camping ground, traditional law and culture
community	child care premises, civic use, corrective institution, educational establishment, health care centre, worship building
open space	agriculture - extensive, essential service distribution network, traditional law and culture
rural	rural pursuit, agriculture - extensive, animal husbandry - intensive, agriculture - intensive, essential service distribution network
recreation	recreation, essential service distribution network
pedestrian access way	essential service distribution network, pedestrian access way
drinking water source protection area	any use permitted under the Drinking Water Source Protection Plan
waterway	agriculture - extensive, agriculture - intensive, traditional law and culture
commercial	art centre, caravan park, motel, office, service station, shop, tourism accommodation
industrial	fuel depot, industry, motor vehicle repair, storage, vehicle wrecking
public utility	electricity supply, essential service distribution network, drinking water supply, wastewater disposal, telecommunications, rubbish disposal



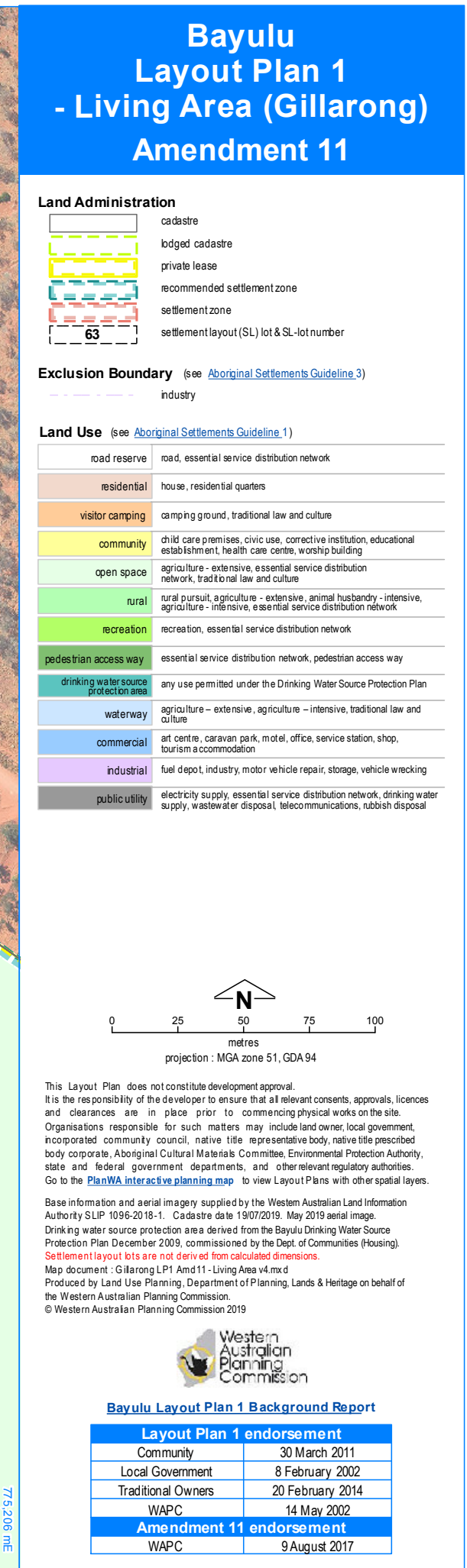
This Layout Plan does not constitute development approval. It is the responsibility of the developer to ensure that all relevant consents, approvals, licences and clearances are in place prior to commencing physical works on the site. Organisations responsible for such matters may include land owner, local government, incorporated community council, native title representative body, native title prescribed body corporate, Aboriginal Cultural Materials Committee, Environmental Protection Authority, state and federal government departments, and other relevant regulatory authorities. Go to the [PlanWA interactive planning map](#) to view Layout Plans with other spatial layers.

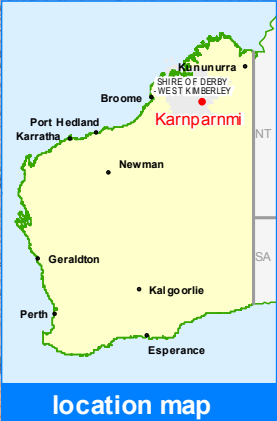
Base information and aerial imagery supplied by the Western Australian Land Information Authority SLIP 1096-2018-1. Cadastre date 19/07/2019. May 2019 aerial image. Drinking water source protection area derived from the Bayulu Drinking Water Source Protection Plan December 2009, commissioned by the Dept. of Communities (Housing). Settlement layout lots are not derived from calculated dimensions. Map document : Bayulu LP1 Amd 11 - Living Area v4.mxd Produced by Land Use Planning, Department of Planning, Lands & Heritage on behalf of the Western Australian Planning Commission. © Western Australian Planning Commission 2019



Bayulu Layout Plan 1 Background Report

Layout Plan 1 endorsement	
Community	30 March 2011
Local Government	8 February 2002
Traditional Owners	20 February 2014
WAPC	14 May 2002
Amendment 11 endorsement	
WAPC	9 August 2017





Bayulu

Layout Plan 1

- Living Area (Karnparnmi)

Amendment 11

Land Administration

	cadastre
	lodged cadastre
	private lease
	recommended settlement zone
	settlement zone
	settlement layout (SL) lot & SL-lot number

Land Use (see [Aboriginal Settlements Guideline 1](#))

road reserve	road, essential service distribution network
residential	house, residential quarters
visitor camping	camping ground, traditional law and culture
community	child care premises, civic use, corrective institution, educational establishment, health care centre, worship building
open space	agriculture - extensive, essential service distribution network, traditional law and culture
rural	rural pursuit, agriculture - extensive, animal husbandry - intensive, agriculture - intensive, essential service distribution network
recreation	recreation, essential service distribution network
pedestrian access way	essential service distribution network, pedestrian access way
drinking water source protection area	any use permitted under the Drinking Water Source Protection Plan
waterway	agriculture - extensive, agriculture - intensive, traditional law and culture
commercial	art centre, caravan park, motel, office, service station, shop, tourism accommodation
industrial	fuel depot, industry, motor vehicle repair, storage, vehicle wrecking
public utility	electricity supply, essential service distribution network, drinking water supply, wastewater disposal, telecommunications, rubbish disposal

0255075100125

metres

projection : MGA zone 51, GDA 94

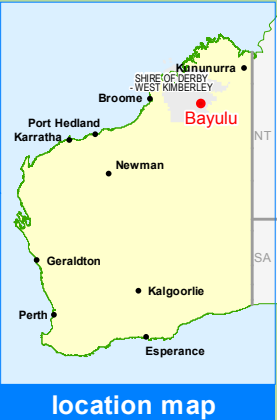
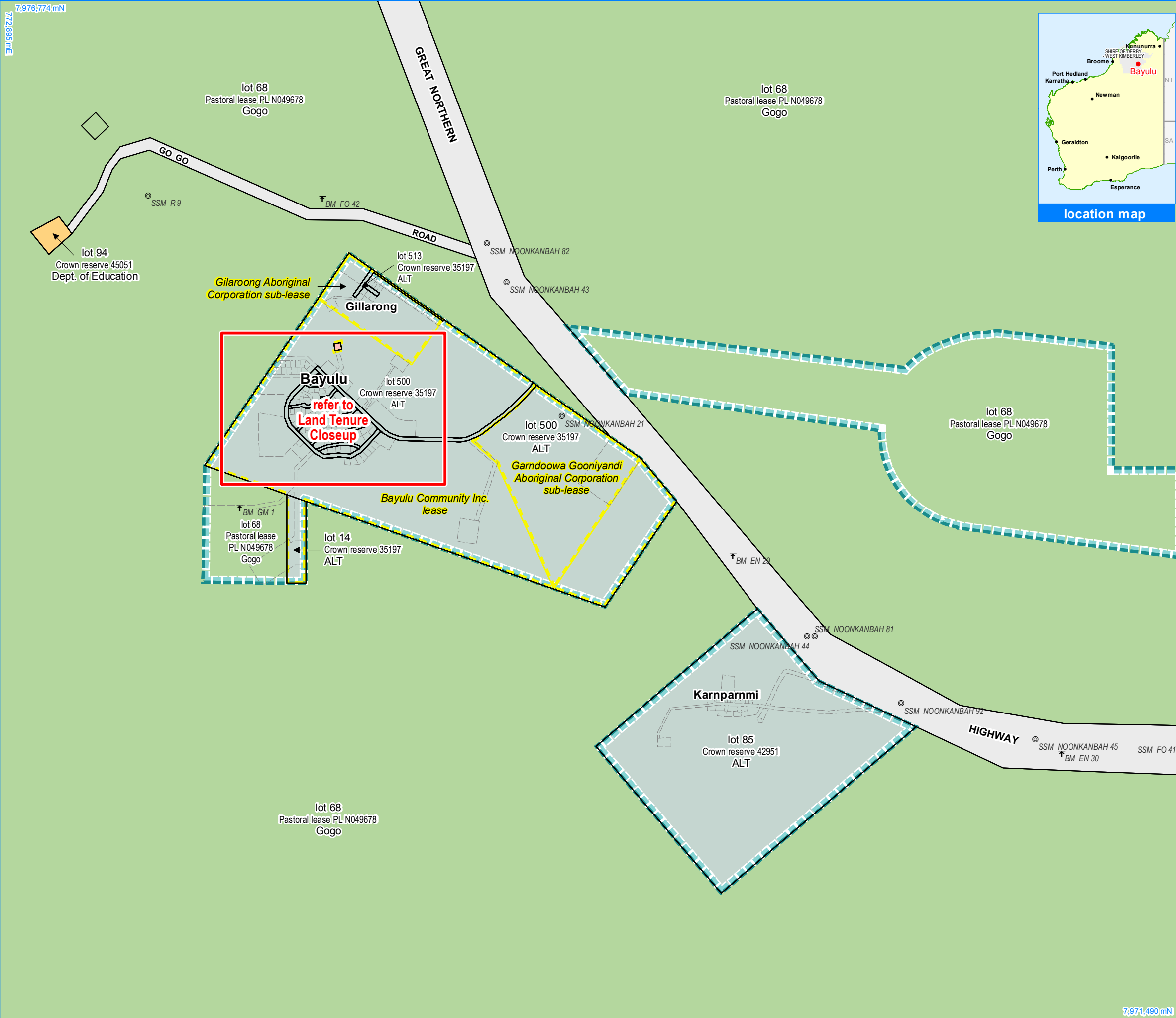
This Layout Plan does not constitute development approval. It is the responsibility of the developer to ensure that all relevant consents, approvals, licences and clearances are in place prior to commencing physical works on the site. Organisations responsible for such matters may include land owner, local government, incorporated community council, native title representative body, native title prescribed body corporate, Aboriginal Cultural Materials Committee, Environmental Protection Authority, state and federal government departments, and other relevant regulatory authorities. Go to the [PlanWA interactive planning map](#) to view Layout Plans with other spatial layers.

Base information and aerial imagery supplied by the Western Australian Land Information Authority SLIP 1096-2018-1. Cadastre date 19/07/2019. May 2019 aerial image. Drinking water source protection area derived from the Bayulu Drinking Water Source Protection Plan December 2009, commissioned by the Dept. of Communities (Housing). Settlement layout lots are not derived from calculated dimensions.

Map document : Karnparnmi LP1 Amd11 - Living Area v4.mxd
Produced by Land Use Planning, Department of Planning, Lands & Heritage on behalf of the Western Australian Planning Commission.
© Western Australian Planning Commission 2019

Bayulu Layout Plan 1 Background Report

Layout Plan 1 endorsement	
Community	30 March 2011
Local Government	8 February 2002
Traditional Owners	20 February 2014
WAPC	14 May 2002
Amendment 11 endorsement	
WAPC	9 August 2017

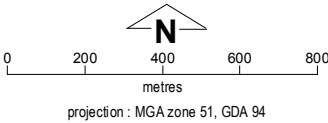


Bayulu Layout Plan 1 - Land Tenure Amendment 11

Land Tenure	
crown reserve	
crown reserve	- Aboriginal Lands Trust
Department of Biodiversity, Conservation & Attractions managed	
freehold	
leasehold	
other	
pastoral lease	
pastoral lease	- Aboriginal Lands Trust
unallocated crown land	
water reserve	

Geodetic Survey Marks	
⚶	bench mark & name
⊙	standard survey mark & name

Land Administration	
	cadastre
	lodged cadastre
	private lease
	recommended settlement zone
	settlement zone
	settlement layout (SL) lot

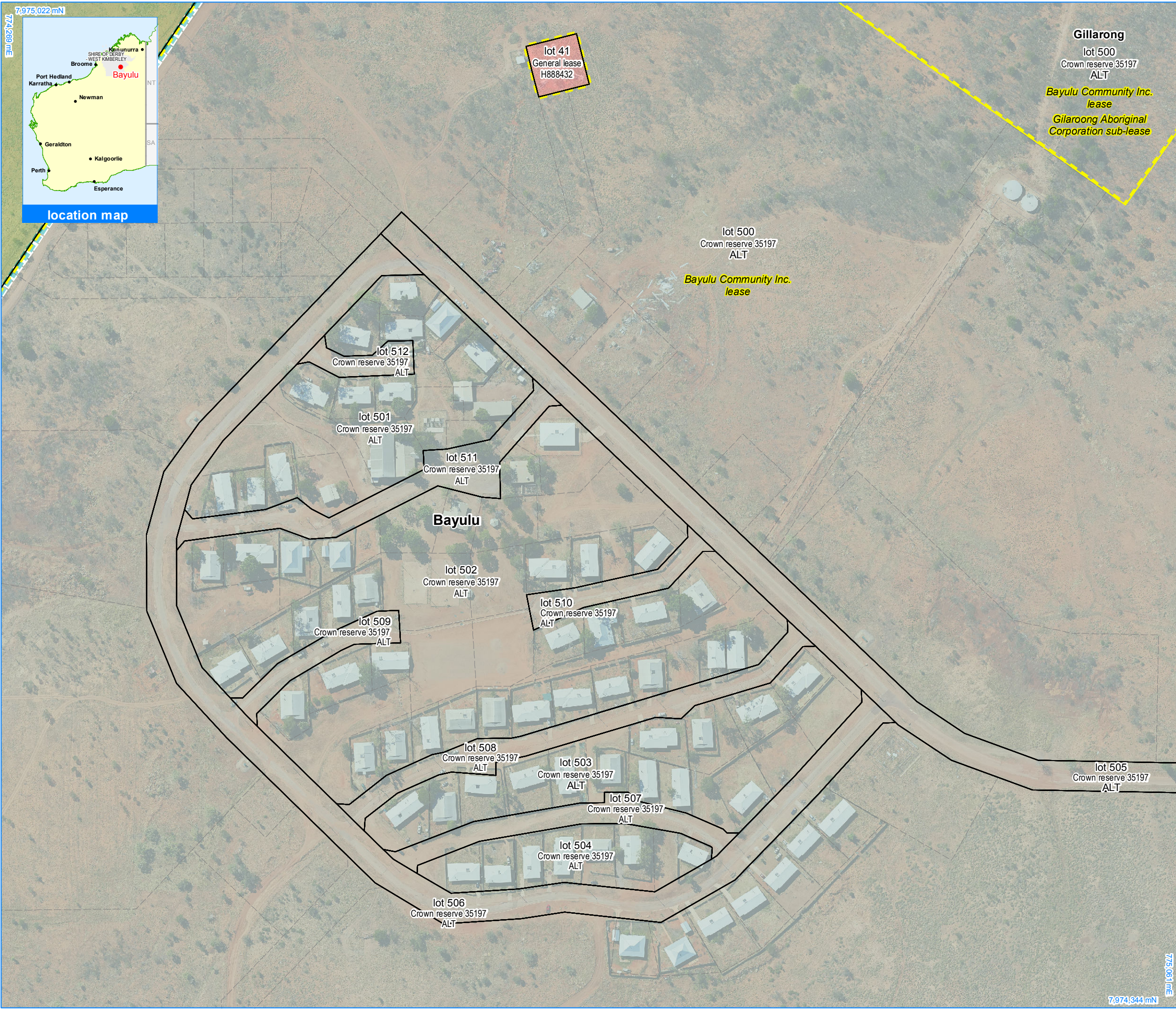


This Layout Plan does not constitute development approval. It is the responsibility of the developer to ensure that all relevant consents, approvals, licences and clearances are in place prior to commencing physical works on the site. Organisations responsible for such matters may include land owner, local government, incorporated community council, native title representative body, native title prescribed body corporate, Aboriginal Cultural Materials Committee, Environmental Protection Authority, state and federal government departments, and other relevant regulatory authorities. Go to the [PlanWA interactive planning map](#) to view Layout Plans with other spatial layers.

Base information supplied by the Western Australian Land Information Authority SLIP 1096-2018-1. Cadastre date 19/07/2019.
Settlement layout lots are not derived from calculated dimensions.
Map document : Bayulu LP1 Amd11 - Land Tenure v4.mxd
Produced by Land Use Planning, Department of Planning, Lands & Heritage on behalf of the Western Australian Planning Commission.
© Western Australian Planning Commission 2019



Layout Plan 1 endorsement	
Community	30 March 2011
Local Government	8 February 2002
Traditional Owners	20 February 2014
WAPC	14 May 2002
Amendment 11 endorsement	
WAPC	9 August 2017



Bayulu

Layout Plan 1

- Land Tenure Closeup

Amendment 11

Land Tenure

crown reserve	
crown reserve	- Aboriginal Lands Trust
Department of Biodiversity, Conservation & Attractions managed	
freehold	
leasehold	
other	
pastoral lease	
pastoral lease	- Aboriginal Lands Trust
unallocated crown land	
water reserve	

Land Administration

	cadastre
	lodged cadastre
	private lease
	recommended settlement zone
	settlement zone
	settlement layout (SL) lot

0 20 40 60 80 100
metres
projection : MGA zone 51, GDA 94

This Layout Plan does not constitute development approval. It is the responsibility of the developer to ensure that all relevant consents, approvals, licences and clearances are in place prior to commencing physical works on the site. Organisations responsible for such matters may include land owner, local government, incorporated community council, native title representative body, native title prescribed body corporate, Aboriginal Cultural Materials Committee, Environmental Protection Authority, state and federal government departments, and other relevant regulatory authorities. Go to the [PlanWA interactive planning map](#) to view Layout Plans with other spatial layers.

Base information & aerial image supplied by the Western Australian Land Information Authority SLIP 1096-2018-1. Cadastre date 19/07/2019. May 2019 air photo.
Settlement layout lots are not derived from calculated dimensions.
Map document : Bayulu LP1 Amd 11 - Land Tenure Closeup v4.mxd
Produced by Land Use Planning, Department of Planning, Lands & Heritage on behalf of the Western Australian Planning Commission.
© Western Australian Planning Commission 2019

Western Australian Planning Commission

Layout Plan 1 endorsement	
Community	30 March 2011
Local Government	8 February 2002
Traditional Owners	20 February 2014
WAPC	14 May 2002
Amendment 11 endorsement	
WAPC	9 August 2017