

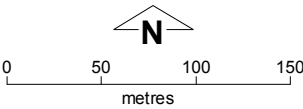
Barrel Well Layout Plan 1 - Living Area

- Land Use**
- community
 - industrial
 - open space
 - public utility
 - recreation
 - residential
 - road reserve
 - rural
 - waterway

- Land Administration**
- cadastre
 - settlement layout (SL) lot & SL-lot number
 - recommended settlement zone
 - settlement zone

- Exclusion Boundary**
- drinking water source wellhead protection zone
 - industry
 - wastewater

- Features**
- production bore



This layout plan does not constitute development approval. It is the responsibility of the developer to ensure that all relevant consents, approvals, licences and clearances are in place prior to commencing physical works on the site. Organisations responsible for such matters may include land owner, local government, native title representative body, Aboriginal Cultural Materials Committee, incorporated community council, Environmental Protection Authority, relevant regulatory authorities and departments.

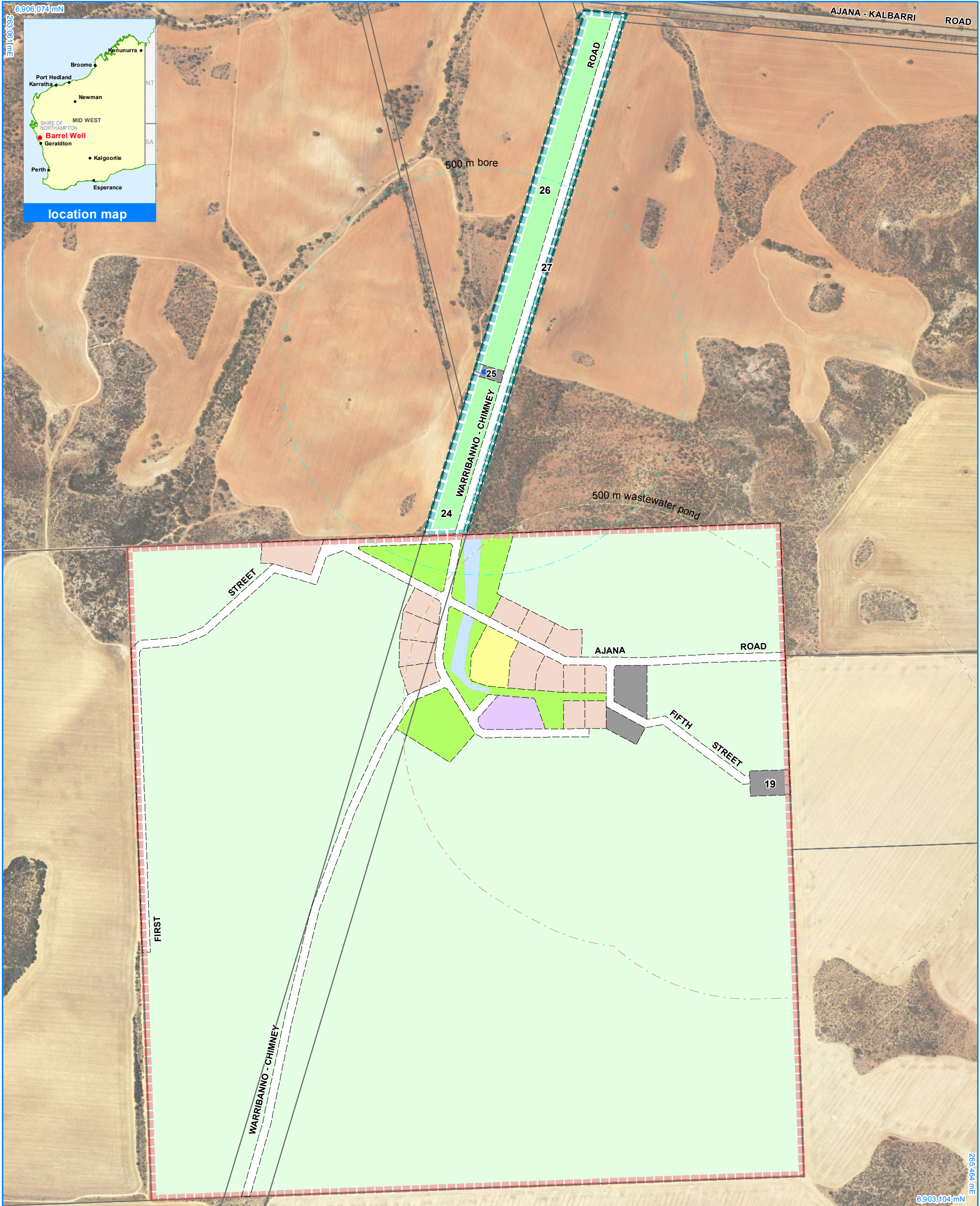
Base information and aerial imagery supplied by the Western Australian Land Information Authority SLIP 1096-2018-1. Extraction date of cadastre 27/07/2018. October 2017 aerial image. Projection : MGA zone 50, GDA 94
Map document : Barrel Well LP1 DV2 - Living Area v2.mxd
Layout plan produced by Land Use Planning, Department of Planning, Lands & Heritage on behalf of the Western Australian Planning Commission.
© Western Australian Planning Commission 2018
Settlement layout lots are not derived from calculated dimensions.



Layout Plan 1 endorsement	
Community	-
Local Government	-
Traditional Owners	-
WAPC	-
Amendment 1 endorsement	
WAPC	-

RATIFIED DRAFT
WAPC 23 April 2013

Draft Version 2

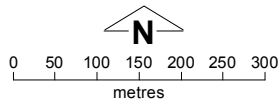


- Land Use**
- community
 - industrial
 - open space
 - public utility
 - recreation
 - residential
 - road reserve
 - rural
 - waterway

- Land Administration**
- cadastre
 - 67 settlement layout (SL) lot & SL-lot number
 - recommended settlement zone
 - settlement zone

- Exclusion Boundary**
- drinking water source wellhead protection zone
 - wastewater

- Features**
- production bore



This layout plan does not constitute development approval. It is the responsibility of the developer to ensure that all relevant consents, approvals, licences and clearances are in place prior to commencing physical works on the site. Organisations responsible for such matters may include land owner, local government, native title representative body, Aboriginal Cultural Materials Committee, incorporated community council, Environmental Protection Authority, relevant regulatory authorities and departments.

Base information and aerial imagery supplied by the Western Australian Land Information Authority SLIP 1096-2018-1. Extraction date of cadastre 27/07/2018. October 2017 aerial image. Projection : MGA zone 50, GDA 94 Map document : Barrel Well LP1 DV2 - Context v2.mxd Layout plan produced by Land Use Planning, Department of Planning, Lands & Heritage on behalf of the Western Australian Planning Commission. © Western Australian Planning Commission 2018 Settlement layout lots are not derived from calculated dimensions.

Western Australian Planning Commission
Government of Western Australia
Department of Communities

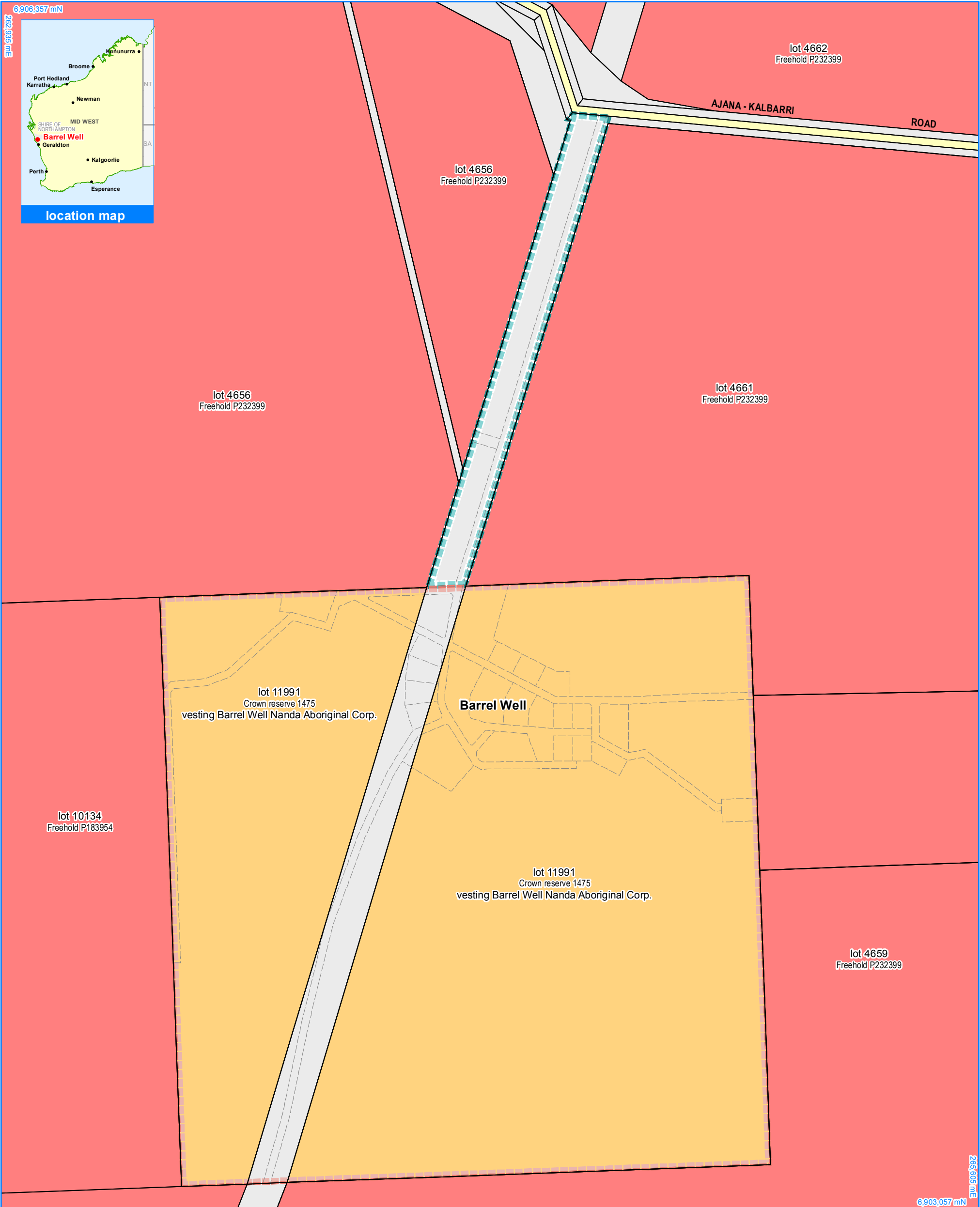
Layout Plan 1 endorsement

Community	
Community	-
Local Government	-
Indigenous	-

RATIFIED DRAFT
WAPC 23 April 2013

Amendment 1 endorsement

WAPC	
WAPC	-

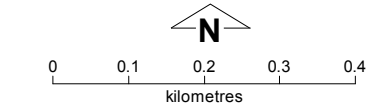


Land Tenure

- crown reserve
- freehold
- other
- unallocated crown land

Land Administration

- cadastre
- settlement layout (SL) lot
- recommended settlement zone
- settlement zone



This layout plan does not constitute development approval. It is the responsibility of the developer to ensure that all relevant consents, approvals, licences and clearances are in place prior to commencing physical works on the site. Organisations responsible for such matters may include land owner, local government, native title representative body, Aboriginal Cultural Materials Committee, incorporated community council, Environmental Protection Authority, relevant regulatory authorities and departments.

Base information and aerial imagery supplied by the Western Australian Land Information Authority SLIP 1096-2018-1. Extraction date of cadastre 27/07/2018. Projection : MGA zone 50, GDA 94. Map document : Barrel Well LP1 DV2 - Land Tenure.mxd. Layout plan produced by Land Use Planning, Department of Planning, Lands & Heritage on behalf of the Western Australian Planning Commission. © Western Australian Planning Commission 2018. Settlement layout lots are not derived from calculated dimensions.



Western Australian Planning Commission
Government of Western Australia
Department of Communities

Layout Plan 1 endorsement	
Community	-
Local Government	-
Indigenous Affairs	-
RATIFIED DRAFT WAPC 23 April 2013	
Amendment 1 endorsement	
WAPC	-