

7,562,943 mN
511,753 mE



Punmu Layout Plan 2 - Living Area Amendment 4

Features

- bore

Land Administration

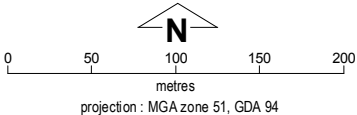
- cadastre
- lodged cadastre
- private lease
- recommended settlement zone
- settlement zone
- settlement layout (SL) lot & SL-lot number

Exclusion Boundary (see [Aboriginal Settlements Guideline 3](#))

- drinking water source wellhead protection zone
- industry
- no-go area
- power station
- wastewater

Land Use (see [Aboriginal Settlements Guideline 1](#))

| | |
|---------------------------------------|--|
| road reserve | road, essential service distribution network |
| residential | house, residential quarters |
| visitor camping | camping ground, traditional law and culture |
| community | child care premises, civic use, corrective institution, educational establishment, health care centre, worship building |
| open space | agriculture - extensive, essential service distribution network, traditional law and culture |
| rural | rural pursuit, agriculture - extensive, animal husbandry - intensive, agriculture - intensive, essential service distribution network |
| recreation | recreation, essential service distribution network |
| pedestrian access way | essential service distribution network, pedestrian access way |
| drinking water source protection area | any use permitted under the Drinking Water Source Protection Plan |
| waterway | agriculture - extensive, agriculture - intensive, traditional law and culture |
| commercial | art centre, caravan park, motel, office, service station, shop, tourism accommodation |
| industrial | fuel depot, industry, motor vehicle repair, storage, vehicle wrecking |
| public utility | electricity supply, essential service distribution network, drinking water supply, wastewater disposal, telecommunications, rubbish disposal |



This Layout Plan does not constitute development approval. It is the responsibility of the developer to ensure that all relevant consents, approvals, licences and clearances are in place prior to commencing physical works on the site. Organisations responsible for such matters may include land owner, local government, incorporated community council, native title representative body, native title prescribed body corporate, Aboriginal Cultural Materials Committee, Environmental Protection Authority, state and federal government departments, and other relevant regulatory authorities. Go to the [PlanWA interactive planning map](#) to view Layout Plans with other spatial layers.

Base information and aerial imagery supplied by the Western Australian Land Information Authority SLIP 1096-2018-1. Cadastre date 11/10/2019. March 2018 aerial image. Drinking water source protection area derived from the Punmu Drinking Water Source Protection Plan May 2019, commissioned by the Dept of Planning, Lands and Heritage. **Settlement layout lots are not derived from calculated dimensions.** Map document : Punmu LP2 Amd4 - Living Area.mxd Produced by Land Use Planning, Department of Planning, Lands & Heritage on behalf of the Western Australian Planning Commission. © Western Australian Planning Commission 2019

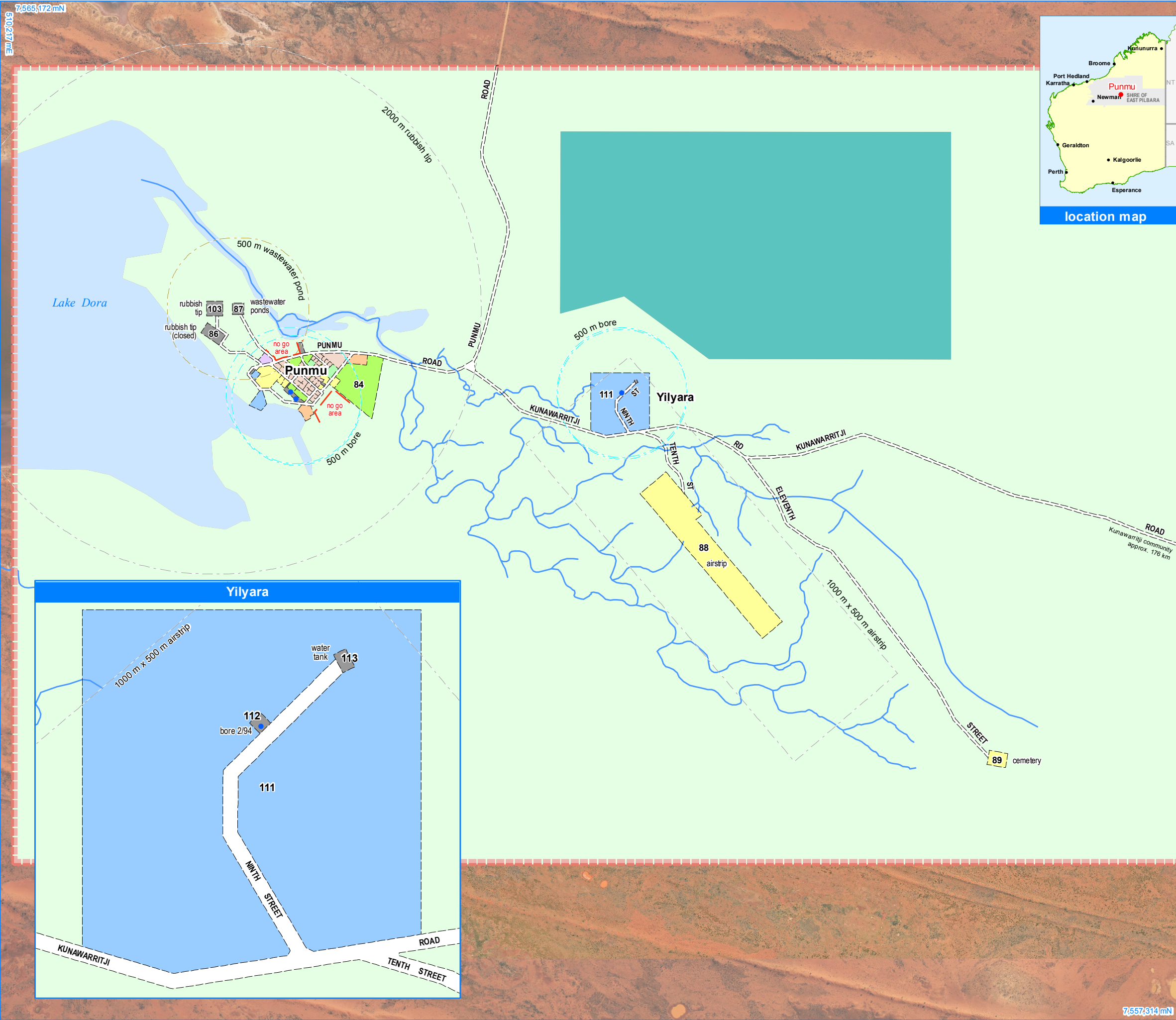


Punmu Layout Plan 2 Background Report

| Layout Plan 2 endorsement | |
|---------------------------|-------------------|
| Community | 20 June 2007 |
| Local Government | 30 March 2007 |
| Traditional Owners | - |
| WAPC | 4 December 2007 |
| Amendment 4 endorsement | |
| WAPC | 17 September 2019 |

7,561,724 mN

513,179 mE



Punmu Layout Plan 2 - Context Amendment 4

Features

- production bore
- watercourse

Land Administration

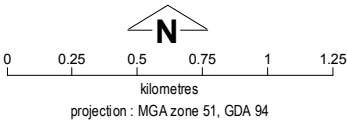
- cadastre
- lodged cadastre
- private lease
- recommended settlement zone
- settlement zone
- settlement layout (SL) lot & SL-lot number

Exclusion Boundary

- drinking water source wellhead protection zone
- no-go area
- utility
- wastewater

Land Use

| | |
|---------------------------------------|--|
| road reserve | road, essential service distribution network |
| residential | house, residential quarters |
| visitor camping | camping ground, traditional law and culture |
| community | child care premises, civic use, corrective institution, educational establishment, health care centre, worship building |
| open space | agriculture - extensive, essential service distribution network, traditional law and culture |
| rural | rural pursuit, agriculture - extensive, animal husbandry - intensive, agriculture - intensive, essential service distribution network |
| recreation | recreation, essential service distribution network |
| pedestrian access way | essential service distribution network, pedestrian access way |
| drinking water source protection area | any use permitted under the Drinking Water Source Protection Plan |
| waterway | agriculture - extensive, agriculture - intensive, traditional law and culture |
| commercial | art centre, caravan park, motel, office, service station, shop, tourism accommodation |
| industrial | fuel depot, industry, motor vehicle repair, storage, vehicle wrecking |
| public utility | electricity supply, essential service distribution network, drinking water supply, wastewater disposal, telecommunications, rubbish disposal |

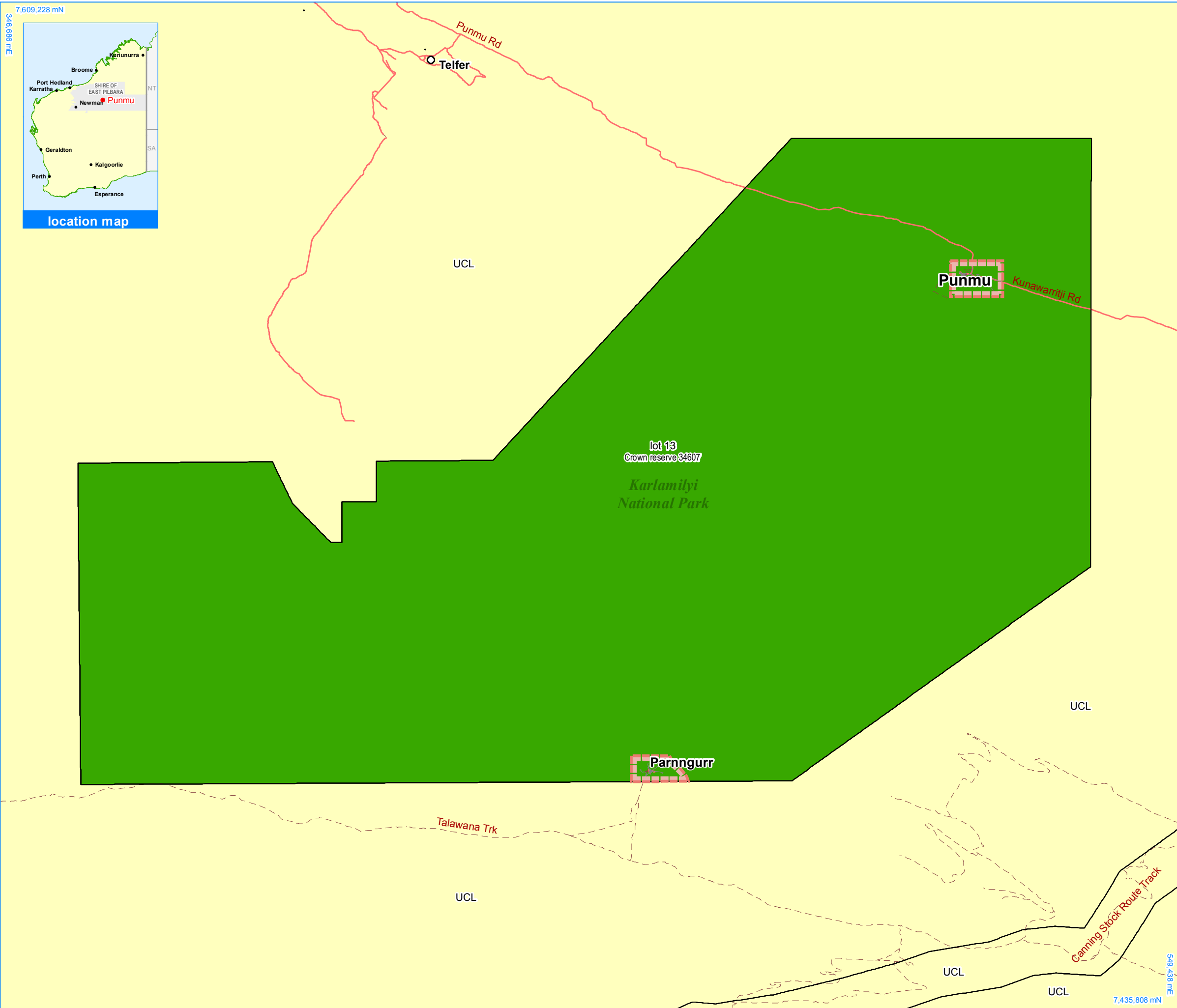


This Layout Plan does not constitute development approval. It is the responsibility of the developer to ensure that all relevant consents, approvals, licences and clearances are in place prior to commencing physical works on the site. Organisations responsible for such matters may include land owner, local government, incorporated community council, native title representative body, native title prescribed body corporate, Aboriginal Cultural Materials Committee, Environmental Protection Authority, state and federal government departments, and other relevant regulatory authorities. Go to the [PlanWA interactive planning map](#) to view Layout Plans with other spatial layers.

Base information and aerial imagery supplied by the Western Australian Land Information Authority SLIP 1096-2018-1. Cadastre date 11/10/2019. July 2010 & March 2018 aerial images. Drinking water source protection area derived from the Punmu Drinking Water Source Protection Plan May 2019, commissioned by the Dept. of Planning, Lands and Heritage. Settlement layout lots are not derived from calculated dimensions. Map document : Punmu LP2 Amd4 - Context.mxd Produced by Land Use Planning, Department of Planning, Lands & Heritage on behalf of the Western Australian Planning Commission. © Western Australian Planning Commission 2019



| Layout Plan 2 endorsement | |
|---------------------------|-------------------|
| Community | 20 June 2007 |
| Local Government | 30 March 2007 |
| Traditional Owners | - |
| WAPC | 4 December 2007 |
| Amendment 4 endorsement | |
| WAPC | 17 September 2019 |



Punmu Layout Plan 2 - Land Tenure Amendment 4

Land Tenure

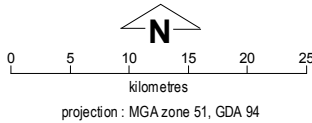
| | |
|--|--------------------------|
| crown reserve | |
| crown reserve | - Aboriginal Lands Trust |
| Department of Biodiversity, Conservation & Attractions managed | |
| freehold | |
| leasehold | |
| other | |
| pastoral lease | |
| pastoral lease | - Aboriginal Lands Trust |
| unallocated crown land | |
| water reserve | |

Land Administration

| | |
|-----------------------------|--|
| cadastre | |
| lodged cadastre | |
| private lease | |
| recommended settlement zone | |
| settlement zone | |
| settlement layout (SL) lot | |

Roads

| | |
|------------------|--|
| national highway | |
| state highway | |
| major road | |
| minor road | |
| track | |



This Layout Plan does not constitute development approval. It is the responsibility of the developer to ensure that all relevant consents, approvals, licences and clearances are in place prior to commencing physical works on the site. Organisations responsible for such matters may include land owner, local government, incorporated community council, native title representative body, native title prescribed body corporate, Aboriginal Cultural Materials Committee, Environmental Protection Authority, state and federal government departments, and other relevant regulatory authorities. Go to the [PlanWA interactive planning map](#) to view Layout Plans with other spatial layers.

Base information supplied by the Western Australian Land Information Authority SLIP 1096-2018-1. Cadastre date 11/10/2019. Settlement layout lots are not derived from calculated dimensions. Map document : Punmu LP2 Amd4 - Land Tenure.mxd Produced by Land Use Planning, Department of Planning, Lands & Heritage on behalf of the Western Australian Planning Commission. © Western Australian Planning Commission 2019



| Layout Plan 2 endorsement | |
|---------------------------|-------------------|
| Community | 20 June 2007 |
| Local Government | 30 March 2007 |
| Traditional Owners | - |
| WAPC | 4 December 2007 |
| Amendment 4 endorsement | |
| WAPC | 17 September 2019 |